

Datasheet for ABIN724355
anti-Calretinin antibody (AA 211-271)[Go to Product page](#)

2 Images

1 Publication

Overview

Quantity:	100 µL
Target:	Calretinin (CALB2)
Binding Specificity:	AA 211-271
Reactivity:	Human, Mouse, Rat
Host:	Rabbit
Clonality:	Polyclonal
Conjugate:	This Calretinin antibody is un-conjugated
Application:	Western Blotting (WB), ELISA, Immunohistochemistry (Paraffin-embedded Sections) (IHC (p)), Immunofluorescence (Cultured Cells) (IF (cc)), Immunofluorescence (Paraffin-embedded Sections) (IF (p)), Immunohistochemistry (Frozen Sections) (IHC (fro))

Product Details

Immunogen:	KLH conjugated synthetic peptide derived from human Calretinin
Isotype:	IgG
Cross-Reactivity:	Human, Mouse, Rat
Predicted Reactivity:	Dog,Cow,Pig,Horse
Purification:	Purified by Protein A.

Target Details

Target:	Calretinin (CALB2)
---------	--------------------

Target Details

Alternative Name:	Calretinin (CALB2 Products)
Background:	<p>Synonyms: CR, CAL2, CAB29, Calretinin, 29 kDa calbindin, CALB2</p> <p>Background: Calretinin is a calcium-binding protein which is abundant in auditory neurons. It belongs to the calbindin family. Calbindin 2 (calretinin), closely related to calbindin 1, is an intracellular calcium-binding protein belonging to the troponin C superfamily. Calbindin 1 is known to be involved in the vitamin-D-dependent calcium absorption through intestinal and renal epithelia, while the function of neuronal calbindin 1 and calbindin2 is poorly understood. The sequence of the calbindin 2 cDNA reveals an open reading frame of 271 codons coding for a protein of 31,520 Da, and shares 58 % identical residues with human calbindin1.</p>
Gene ID:	794
UniProt:	P22676

Application Details

Application Notes:	WB 1:300-5000 ELISA 1:500-1000 IHC-P 1:200-400 IHC-F 1:100-500 IF(IHC-P) 1:50-200 IF(IHC-F) 1:50-200 IF(ICC) 1:50-200
Restrictions:	For Research Use only

Handling

Format:	Liquid
Concentration:	1 µg/µL
Buffer:	0.01M TBS(pH 7.4) with 1 % BSA, 0.02 % Proclin300 and 50 % Glycerol.
Preservative:	ProClin
Precaution of Use:	This product contains ProClin: a POISONOUS AND HAZARDOUS SUBSTANCE, which should be handled by trained staff only.
Storage:	4 °C,-20 °C
Storage Comment:	Shipped at 4°C. Store at -20°C for one year. Avoid repeated freeze/thaw cycles.

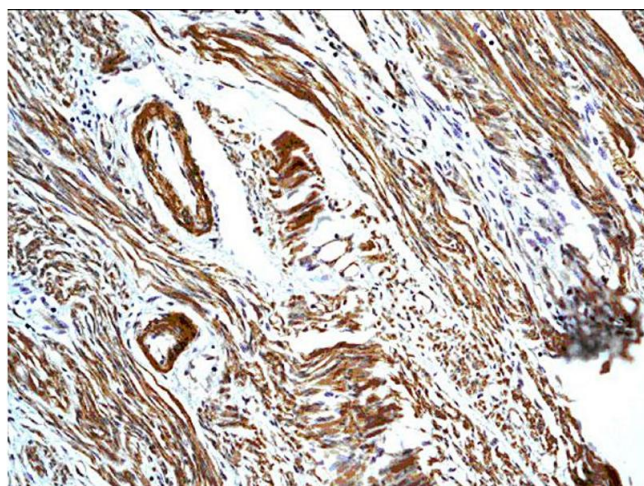
Handling

Expiry Date: 12 months

Publications

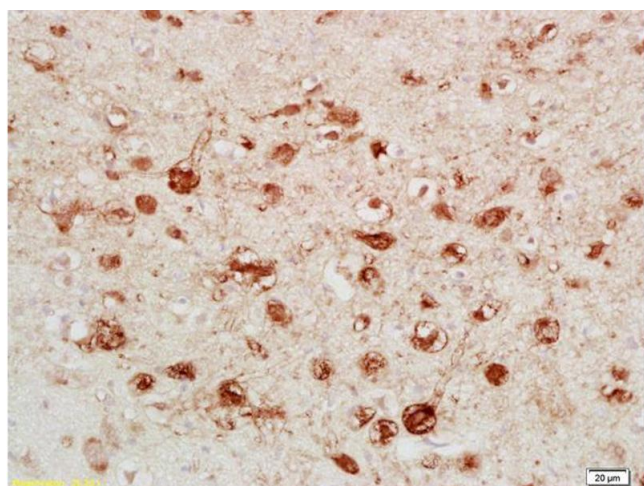
Product cited in: Suzui, Futakuchi, Fukamachi, Numano, Abdelgied, Takahashi, Ohnishi, Omori, Tsuruoka, Hirose, Kanno, Sakamoto, Alexander, Alexander, Jiegou, Tsuda: "Multiwalled carbon nanotubes intratracheally instilled into the rat lung induce development of pleural malignant mesothelioma and lung tumors." in: **Cancer science**, Vol. 107, Issue 7, pp. 924-35, (2016) ([PubMed](#)).

Images



Immunohistochemistry

Image 1. Formalin-fixed and paraffin embedded human uterus labeled with Anti-Calretinin/CA Polyclonal Antibody, Unconjugated (ABIN724355) followed by conjugation to the secondary antibody and DAB staining



Immunohistochemistry

Image 2. Formalin-fixed and paraffin embedded rat brain labeled with Anti-Calretinin/CA Polyclonal Antibody, Unconjugated (ABIN724355) followed by conjugation to the secondary antibody and DAB staining