

Datasheet for ABIN7243562  
**anti-ATP2A1/SERCA1 antibody**[Go to Product page](#)

## 2 Images

## Overview

Quantity:	200 µL
Target:	ATP2A1/SERCA1 (ATP2A1)
Reactivity:	Human
Host:	Rabbit
Clonality:	Polyclonal
Conjugate:	This ATP2A1/SERCA1 antibody is un-conjugated
Application:	ELISA, Immunohistochemistry (IHC)

## Product Details

Immunogen:	Synthetic peptide of human ATP2A1
Isotype:	IgG
Characteristics:	Polyclonal Antibody
Purification:	Affinity purification

## Target Details

Target:	ATP2A1/SERCA1 (ATP2A1)
Alternative Name:	ATP2A1 ( <a href="#">ATP2A1 Products</a> )
Background:	This gene encodes one of the SERCA Ca(2+)-ATPases, which are intracellular pumps located in the sarcoplasmic or endoplasmic reticula of muscle cells. This enzyme catalyzes the hydrolysis of ATP coupled with the translocation of calcium from the cytosol to the sarcoplasmic reticulum lumen, and is involved in muscular excitation and contraction. Mutations in this gene

## Target Details

cause some autosomal recessive forms of Brody disease, characterized by increasing impairment of muscular relaxation during exercise. Alternative splicing results in three transcript variants encoding different isoforms.

NCBI Accession: [NP\\_775293](#)

UniProt: [O14983](#)

Pathways: [Ribonucleoside Biosynthetic Process](#)

## Application Details

Application Notes: IHC 1:50-1:200

Restrictions: For Research Use only

## Handling

Format: Liquid

Concentration: 0.7 mg/mL

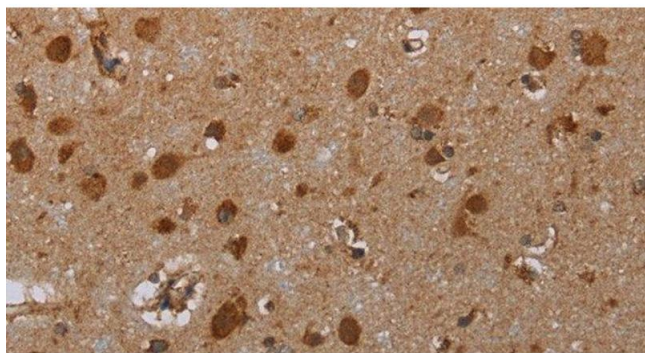
Buffer: PBS with 0.05 % sodium azide and 50 % glycerol, PH7.4

Preservative: Sodium azide

Precaution of Use: This product contains Sodium azide: a POISONOUS AND HAZARDOUS SUBSTANCE which should be handled by trained staff only.

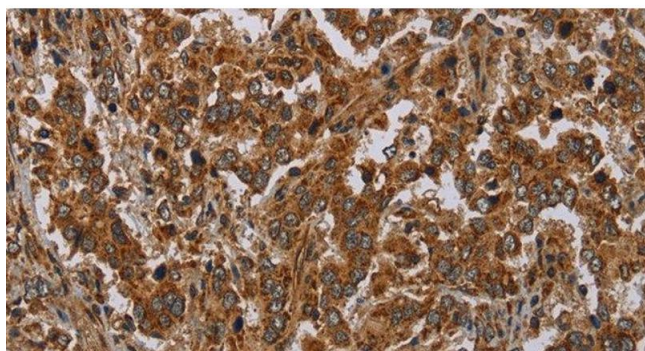
Storage: -20 °C

Storage Comment: Store at -20°C. Avoid freeze / thaw cycles.



#### Immunohistochemistry (Paraffin-embedded Sections)

**Image 1.** Immunohistochemistry of paraffin-embedded Human brain tissue using ATP2A1 Polyclonal Antibody at dilution 1:30



#### Immunohistochemistry (Paraffin-embedded Sections)

**Image 2.** Immunohistochemistry of paraffin-embedded Human liver cancer tissue using ATP2A1 Polyclonal Antibody at dilution 1:30