

Datasheet for ABIN7243568

anti-MOB1A antibody

3 Images

[Go to Product page](#)

Overview

Quantity:	200 µL
Target:	MOB1A (MOBKL1B)
Reactivity:	Human, Mouse, Rat
Host:	Rabbit
Clonality:	Polyclonal
Conjugate:	This MOB1A antibody is un-conjugated
Application:	ELISA, Western Blotting (WB), Immunohistochemistry (IHC)

Product Details

Immunogen:	Synthetic peptide of human MOB1A
Isotype:	IgG
Characteristics:	Polyclonal Antibody
Purification:	Affinity purification

Target Details

Target:	MOB1A (MOBKL1B)
Alternative Name:	MOB1A (MOBKL1B Products)
Background:	MOB1 was first identified in yeast as a protein that binds to Mps with essential roles in the completion of mitosis and the maintenance of ploidy. Its Drosophila and mammalian homologs, Mats and MOB1, respectively, are involved in the Hippo signaling tumor suppressor pathway, which plays a critical role in organ size regulation and which has been implicated in cancer

Target Details

development . There are two MOB1 proteins in humans, MOB1 α and MOB1 β , that are encoded by two different genes but which have greater than 95 % amino acid sequence identity.

Molecular Weight: 25 kDa

NCBI Accession: [NP_060691](#)

UniProt: [Q9H8S9](#)

Application Details

Application Notes: WB 1:500-1:2000, IHC 1:50-1:200

Restrictions: For Research Use only

Handling

Format: Liquid

Concentration: 0.4 mg/mL

Buffer: PBS with 0.05 % sodium azide and 50 % glycerol, PH7.4

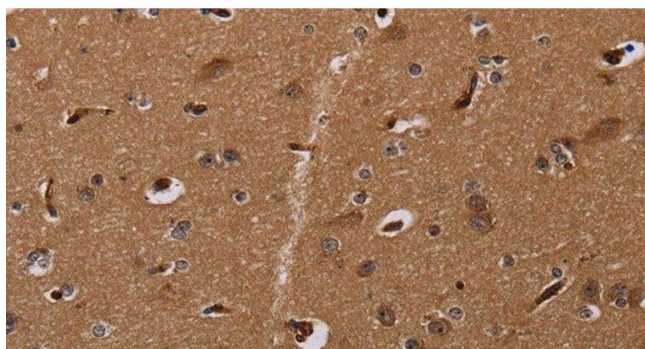
Preservative: Sodium azide

Precaution of Use: This product contains Sodium azide: a POISONOUS AND HAZARDOUS SUBSTANCE which should be handled by trained staff only.

Storage: -20 °C

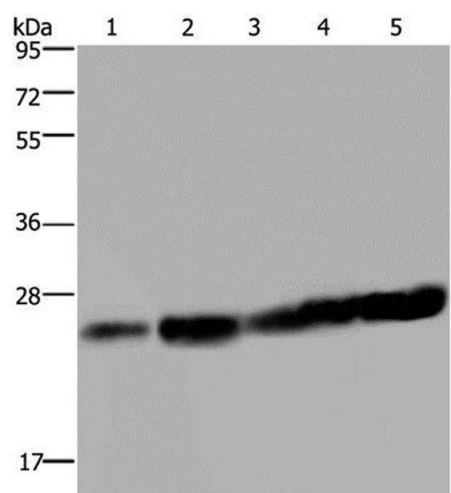
Storage Comment: Store at -20°C. Avoid freeze / thaw cycles.

Images



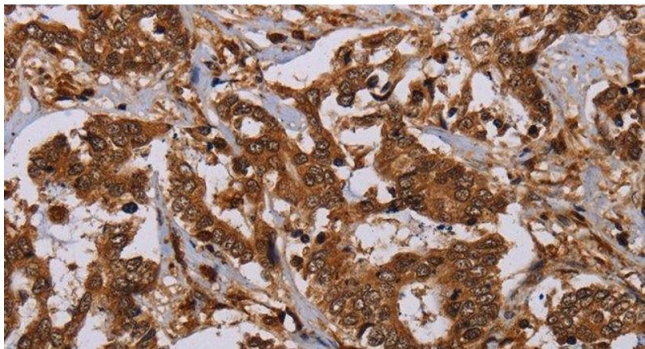
Immunohistochemistry (Paraffin-embedded Sections)

Image 1. Immunohistochemistry of paraffin-embedded Human brain using MOB1A Polyclonal Antibody at dilution of 1:30



Western Blotting

Image 2. Western Blot analysis of HeLa and Jurkat cell, Mouse liver tissue, K562 and A375 cell using MOB1A Polyclonal Antibody at dilution of 1:200



Immunohistochemistry (Paraffin-embedded Sections)

Image 3. Immunohistochemistry of paraffin-embedded Human liver cancer using MOB1A Polyclonal Antibody at dilution of 1:30