

Datasheet for ABIN7243574
anti-MRGPRX1 antibody[Go to Product page](#)

2 Images

Overview

Quantity:	200 µL
Target:	MRGPRX1
Reactivity:	Human
Host:	Rabbit
Clonality:	Polyclonal
Conjugate:	This MRGPRX1 antibody is un-conjugated
Application:	ELISA, Immunohistochemistry (IHC)

Product Details

Immunogen:	Synthetic peptide of human MRGPRX1
Isotype:	IgG
Characteristics:	Polyclonal Antibody
Purification:	Affinity purification

Target Details

Target:	MRGPRX1
Alternative Name:	MRGPRX1 (MRGPRX1 Products)
Background:	MRGX1 is an opiod receptor that has been reported exclusively in dorsal root ganglion. MRGX1 is probably involved in the function of nociceptive neurons and may regulate nociceptor function and/or development, including the sensation or modulation of pain. It is potently activated by enkephalins including BAM22 (bovine adrenal medulla peptide 22) and BAM (8-22).

Target Details

BAM22 is the most potent compound and evoked a large and dose-dependent release of intracellular calcium in stably transfected cells.

NCBI Accession: [NP_671732](#)

UniProt: [Q96LB2](#)

Application Details

Application Notes: IHC 1:50-1:200

Restrictions: For Research Use only

Handling

Format: Liquid

Concentration: 0.5 mg/mL

Buffer: PBS with 0.05 % sodium azide and 50 % glycerol, PH7.4

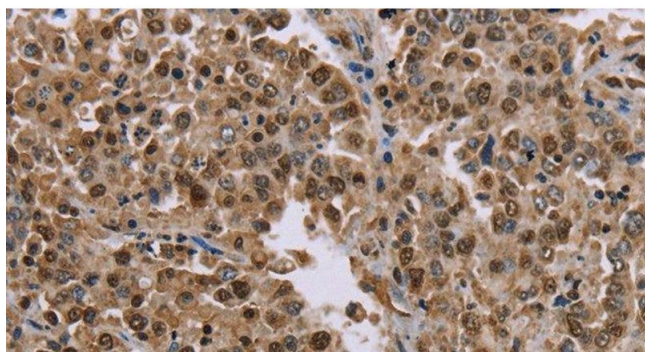
Preservative: Sodium azide

Precaution of Use: This product contains Sodium azide: a POISONOUS AND HAZARDOUS SUBSTANCE which should be handled by trained staff only.

Storage: -20 °C

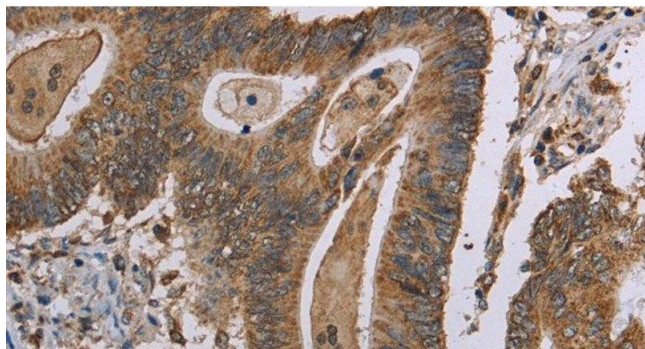
Storage Comment: Store at -20°C. Avoid freeze / thaw cycles.

Images



Immunohistochemistry (Paraffin-embedded Sections)

Image 1. Immunohistochemistry of paraffin-embedded Human liver cancer tissue using MRGPRX1 Polyclonal Antibody at dilution 1:40



Immunohistochemistry (Paraffin-embedded Sections)

Image 2. Immunohistochemistry of paraffin-embedded Human colon cancer tissue using MRGPRX1 Polyclonal Antibody at dilution 1:40