

Datasheet for ABIN7243604

anti-NDUFA8 antibody

3 Images

[Go to Product page](#)

Overview

Quantity:	200 µL
Target:	NDUFA8
Reactivity:	Human
Host:	Rabbit
Clonality:	Polyclonal
Conjugate:	This NDUFA8 antibody is un-conjugated
Application:	Western Blotting (WB), ELISA, Immunohistochemistry (IHC)

Product Details

Immunogen:	Synthetic peptide of human NDUFA8
Isotype:	IgG
Characteristics:	Polyclonal Antibody
Purification:	Affinity purification

Target Details

Target:	NDUFA8
Alternative Name:	NDUFA8 (NDUFA8 Products)
Background:	The protein encoded by this gene belongs to the complex I 19 kDa subunit family. Mammalian complex I is composed of 45 different subunits. This protein has NADH dehydrogenase activity and oxidoreductase activity. It plays an important role in transferring electrons from NADH to the respiratory chain. The immediate electron acceptor for the enzyme is believed to be

Target Details

	ubiquinone.
Molecular Weight:	20 kDa
NCBI Accession:	NP_055037
UniProt:	P51970

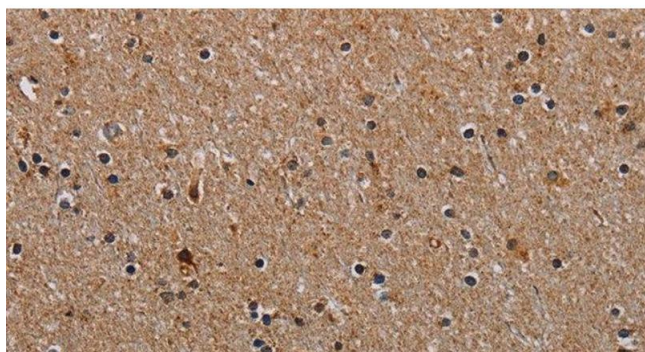
Application Details

Application Notes:	WB 1:500-1:2000, IHC 1:50-1:200
Restrictions:	For Research Use only

Handling

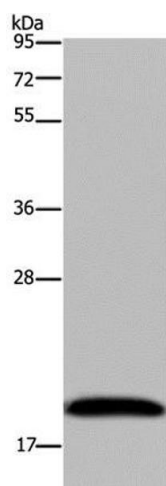
Format:	Liquid
Concentration:	0.8 mg/mL
Buffer:	PBS with 0.05 % sodium azide and 50 % glycerol, PH7.4
Preservative:	Sodium azide
Precaution of Use:	This product contains Sodium azide: a POISONOUS AND HAZARDOUS SUBSTANCE which should be handled by trained staff only.
Storage:	-20 °C
Storage Comment:	Store at -20°C. Avoid freeze / thaw cycles.

Images



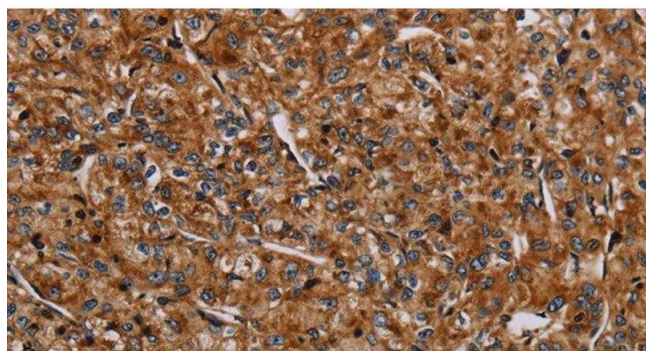
Immunohistochemistry (Paraffin-embedded Sections)

Image 1. Immunohistochemistry of paraffin-embedded Human brain using NDUFA8 Polyclonal Antibody at dilution of 1:40



Western Blotting

Image 2. Western Blot analysis of 293T cell using NDUF A8 Polyclonal Antibody at dilution of 1:300



Immunohistochemistry (Paraffin-embedded Sections)

Image 3. Immunohistochemistry of paraffin-embedded Human prostate cancer using NDUF A8 Polyclonal Antibody at dilution of 1:40