

Datasheet for ABIN7243706

**anti-PDE4A antibody**

3 Images

[Go to Product page](#)

## Overview

|              |  |
|--------------|--|
| Quantity:    | 200 µL   |
| Target:      | PDE4A  |
| Reactivity:  | Human  |
| Host:        | Rabbit   |
| Clonality:   | Polyclonal   |
| Conjugate:   | This PDE4A antibody is un-conjugated                     |
| Application: | Western Blotting (WB), Immunohistochemistry (IHC), ELISA |

## Product Details

|                  |                                  |
|------------------|----------------------------------|
| Immunogen:       | Synthetic peptide of human PDE4A |
| Isotype:         | IgG                              |
| Characteristics: | Polyclonal Antibody              |
| Purification:    | Affinity purification            |

## Target Details

|                   |   |
|-------------------|---|
| Target:           | PDE4A   |
| Alternative Name: | PDE4A ( <a href="#">PDE4A Products</a> )  |
| Background:       | The protein encoded by this gene belongs to the cyclic nucleotide phosphodiesterase (PDE) family, and PDE4 subfamily. This PDE hydrolyzes the second messenger, cAMP, which is a regulator and mediator of a number of cellular responses to extracellular signals. Thus, by regulating the cellular concentration of cAMP, this protein plays a key role in many important |

## Target Details

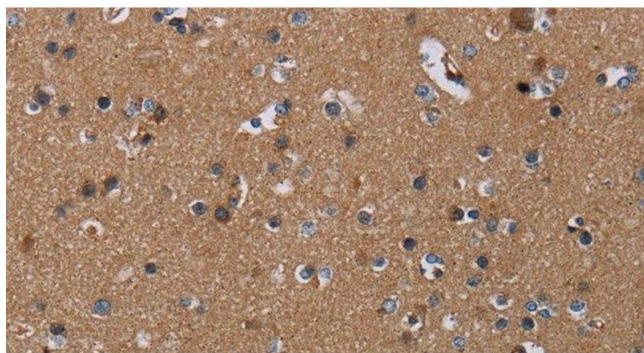
|                   |   |
|-------------------|---|
|                   | physiological processes. Alternatively spliced transcript variants encoding different isoforms have been described for this gene. |
| Molecular Weight: | 98 kDa  |
| NCBI Accession:   | <a href="#">NP_001104777</a>  |
| UniProt:          | <a href="#">P27815</a>  |
| Pathways:         | <a href="#">cAMP Metabolic Process</a>  |

## Application Details

|                    |                                 |
|--------------------|---------------------------------|
| Application Notes: | WB 1:500-1:2000, IHC 1:50-1:200 |
| Restrictions:      | For Research Use only           |

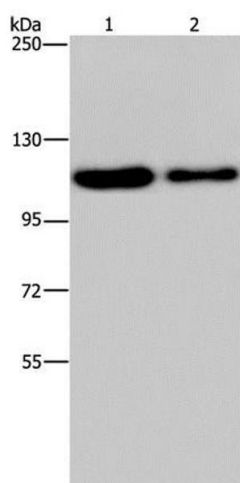
## Handling

|                    |  |
|--------------------|--|
| Format:            | Liquid   |
| Concentration:     | 0.5 mg/mL  |
| Buffer:            | PBS with 0.05 % sodium azide and 50 % glycerol, PH7.4  |
| Preservative:      | Sodium azide   |
| Precaution of Use: | This product contains Sodium azide: a POISONOUS AND HAZARDOUS SUBSTANCE which should be handled by trained staff only. |
| Storage:           | -20 °C   |
| Storage Comment:   | Store at -20°C. Avoid freeze / thaw cycles.  |



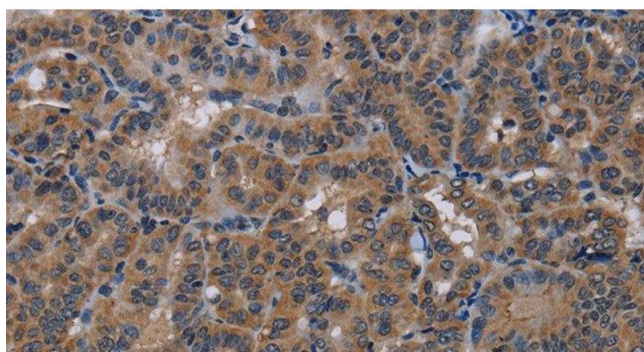
#### Immunohistochemistry (Paraffin-embedded Sections)

**Image 1.** Immunohistochemistry of paraffin-embedded Human brain using PDE4A Polyclonal Antibody at dilution of 1:40



#### Western Blotting

**Image 2.** Western Blot analysis of Hela and A172 cell using PDE4A Polyclonal Antibody at dilution of 1:300



#### Immunohistochemistry (Paraffin-embedded Sections)

**Image 3.** Immunohistochemistry of paraffin-embedded Human thyroid cancer using PDE4A Polyclonal Antibody at dilution of 1:40