



Datasheet for ABIN7243724 anti-PLIN1 antibody



[Go to Product page](#)

2 Images

Overview

Quantity:	200 µL
Target:	PLIN1
Reactivity:	Human, Mouse, Rat
Host:	Rabbit
Clonality:	Polyclonal
Conjugate:	This PLIN1 antibody is un-conjugated
Application:	ELISA, Immunohistochemistry (IHC)

Product Details

Immunogen:	Synthetic peptide of human PLIN1
Isotype:	IgG
Characteristics:	Polyclonal Antibody
Purification:	Affinity purification

Target Details

Target:	PLIN1
Alternative Name:	PLIN1 (PLIN1 Products)
Background:	The protein encoded by this gene coats lipid storage droplets in adipocytes, thereby protecting them until they can be broken down by hormone-sensitive lipase. The encoded protein is the major cAMP-dependent protein kinase substrate in adipocytes and, when unphosphorylated, may play a role in the inhibition of lipolysis. Alternatively spliced transcript variants varying in

Target Details

the 5' UTR, but encoding the same protein, have been found for this gene.

NCBI Accession: [NP_002657](#)

UniProt: [O60240](#)

Pathways: [Lipid Metabolism](#)

Application Details

Application Notes: IHC 1:25-1:100

Restrictions: For Research Use only

Handling

Format: Liquid

Concentration: 0.3 mg/mL

Buffer: PBS with 0.05 % sodium azide and 50 % glycerol, PH7.4

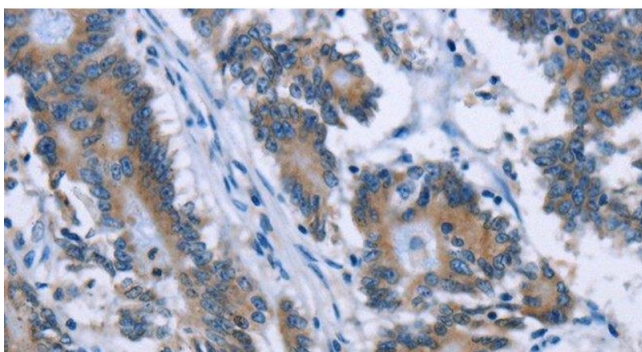
Preservative: Sodium azide

Precaution of Use: This product contains Sodium azide: a POISONOUS AND HAZARDOUS SUBSTANCE which should be handled by trained staff only.

Storage: -20 °C

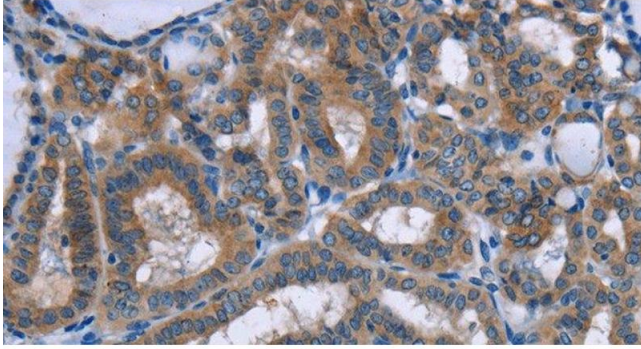
Storage Comment: Store at -20°C. Avoid freeze / thaw cycles.

Images



Immunohistochemistry (Paraffin-embedded Sections)

Image 1. Immunohistochemistry of paraffin-embedded Human colon cancer tissue using PLIN1 Polyclonal Antibody at dilution 1:30



Immunohistochemistry (Paraffin-embedded Sections)

Image 2. Immunohistochemistry of paraffin-embedded Human thyroid cancer tissue using PLIN1 Polyclonal Antibody at dilution 1:30