



Datasheet for ABIN7243739 anti-PGLYRP1 antibody



[Go to Product page](#)

2 Images

Overview

Quantity:	200 µL
Target:	PGLYRP1
Reactivity:	Human, Mouse, Rat
Host:	Rabbit
Clonality:	Polyclonal
Conjugate:	This PGLYRP1 antibody is un-conjugated
Application:	ELISA, Immunohistochemistry (IHC)

Product Details

Immunogen:	Synthetic peptide of human PGLYRP1
Isotype:	IgG
Characteristics:	Polyclonal Antibody
Purification:	Affinity purification

Target Details

Target:	PGLYRP1
Alternative Name:	PGLYRP1 (PGLYRP1 Products)
Background:	Peptidoglycan recognition protein is a protein that in humans is encoded by the PGLYRP1 gene. Pattern receptor that binds to murein peptidoglycans (PGN) of Gram-positive bacteria. Has bactericidal activity towards Gram-positive bacteria. May kill Gram-positive bacteria by interfering with peptidoglycan biosynthesis. Binds also to Gram-negative bacteria, and has

Target Details

bacteriostatic activity towards Gram-negative bacteria. Plays a role in innate immunity.

NCBI Accession: [NP_005082](#)

UniProt: [O75594](#)

Pathways: [Activation of Innate immune Response](#)

Application Details

Application Notes: IHC 1:25-1:100

Restrictions: For Research Use only

Handling

Format: Liquid

Concentration: 0.5 mg/mL

Buffer: PBS with 0.05 % sodium azide and 50 % glycerol, PH7.4

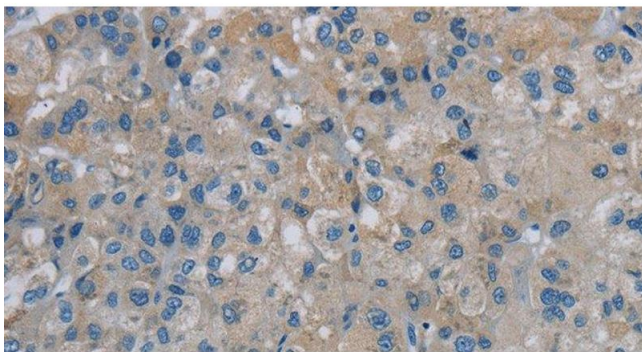
Preservative: Sodium azide

Precaution of Use: This product contains Sodium azide: a POISONOUS AND HAZARDOUS SUBSTANCE which should be handled by trained staff only.

Storage: -20 °C

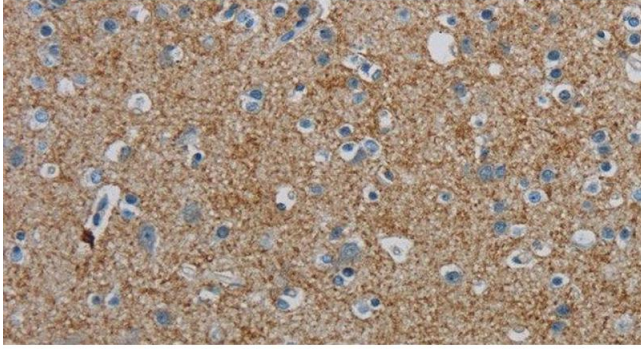
Storage Comment: Store at -20°C. Avoid freeze / thaw cycles.

Images



Immunohistochemistry (Paraffin-embedded Sections)

Image 1. Immunohistochemistry of paraffin-embedded Human liver cancer tissue using PGLYRP1 Polyclonal Antibody at dilution 1:40



Immunohistochemistry (Paraffin-embedded Sections)

Image 2. Immunohistochemistry of paraffin-embedded Human brain tissue using PGLYRP1 Polyclonal Antibody at dilution 1:40