

Datasheet for ABIN7243751

**anti-PLEC antibody**[Go to Product page](#)**1** Image

## Overview

|              |                                     |
|--------------|-------------------------------------|
| Quantity:    | 200 µL                              |
| Target:      | PLEC                                |
| Reactivity:  | Human, Mouse, Rat                   |
| Host:        | Rabbit                              |
| Clonality:   | Polyclonal                          |
| Conjugate:   | This PLEC antibody is un-conjugated |
| Application: | ELISA, Immunohistochemistry (IHC)   |

## Product Details

|                  |                                 |
|------------------|---------------------------------|
| Immunogen:       | Synthetic peptide of human PLEC |
| Isotype:         | IgG                             |
| Characteristics: | Polyclonal Antibody             |
| Purification:    | Affinity purification           |

## Target Details

|                   |   |
|-------------------|---|
| Target:           | PLEC  |
| Alternative Name: | PLEC ( <a href="#">PLEC Products</a> )  |
| Background:       | Plectin is a prominent member of an important family of structurally and in part functionally related proteins, termed plakins or cytolinkers, that are capable of interlinking different elements of the cytoskeleton. Plakins, with their multi-domain structure and enormous size, not only play crucial roles in maintaining cell and tissue integrity and orchestrating dynamic changes in |

## Target Details

cytoarchitecture and cell shape, but also serve as scaffolding platforms for the assembly, positioning, and regulation of signaling complexes.

NCBI Accession: [NP\\_000436](#)

UniProt: [Q15149](#)

## Application Details

Application Notes: IHC 1:50-1:200

Restrictions: For Research Use only

## Handling

Format: Liquid

Concentration: 0.6 mg/mL

Buffer: PBS with 0.05 % sodium azide and 50 % glycerol, PH7.4

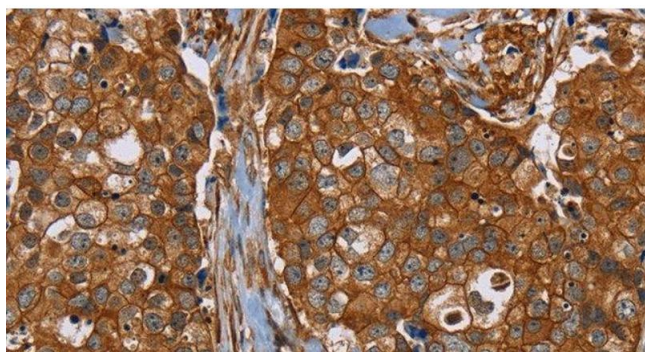
Preservative: Sodium azide

Precaution of Use: This product contains Sodium azide: a POISONOUS AND HAZARDOUS SUBSTANCE which should be handled by trained staff only.

Storage: -20 °C

Storage Comment: Store at -20°C. Avoid freeze / thaw cycles.

## Images



### Immunohistochemistry (Paraffin-embedded Sections)

**Image 1.** Immunohistochemistry of paraffin-embedded Human breast cancer tissue using PLEC Polyclonal Antibody at dilution 1:40