

Datasheet for ABIN7243769

**anti-POMT1 antibody**

3 Images

[Go to Product page](#)

## Overview

Quantity:	200 µL
Target:	POMT1
Reactivity:	Human
Host:	Rabbit
Clonality:	Polyclonal
Conjugate:	This POMT1 antibody is un-conjugated
Application:	Western Blotting (WB), Immunohistochemistry (IHC), ELISA

## Product Details

Immunogen:	Synthetic peptide of human POMT1
Isotype:	IgG
Characteristics:	Polyclonal Antibody
Purification:	Affinity purification

## Target Details

Target:	POMT1
Alternative Name:	POMT1 ( <a href="#">POMT1 Products</a> )
Background:	The protein encoded by this gene is an O-mannosyltransferase that requires interaction with the product of the POMT2 gene for enzymatic function. The encoded protein is found in the membrane of the endoplasmic reticulum. Defects in this gene are a cause of Walker-Warburg syndrome (WWS) and limb-girdle muscular dystrophy type 2K (LGMD2K). Several transcript

## Target Details

variants encoding different isoforms have been found for this gene.

Molecular Weight:	85 kDa
NCBI Accession:	<a href="#">NP_009102</a>
UniProt:	<a href="#">Q9Y6A1</a>

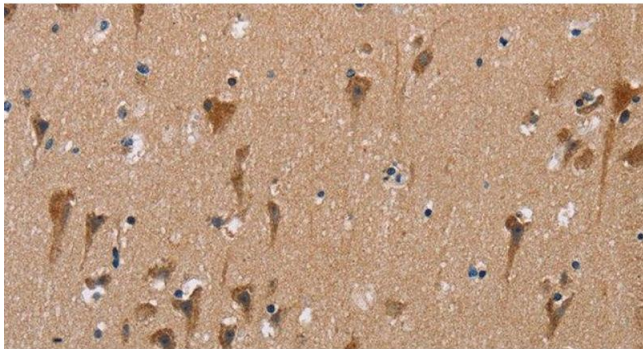
## Application Details

Application Notes:	WB 1:500-1:2000, IHC 1:50-1:200
Restrictions:	For Research Use only

## Handling

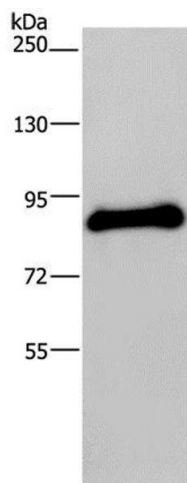
Format:	Liquid
Concentration:	0.9 mg/mL
Buffer:	PBS with 0.05 % sodium azide and 50 % glycerol, PH7.4
Preservative:	Sodium azide
Precaution of Use:	This product contains Sodium azide: a POISONOUS AND HAZARDOUS SUBSTANCE which should be handled by trained staff only.
Storage:	-20 °C
Storage Comment:	Store at -20°C. Avoid freeze / thaw cycles.

## Images



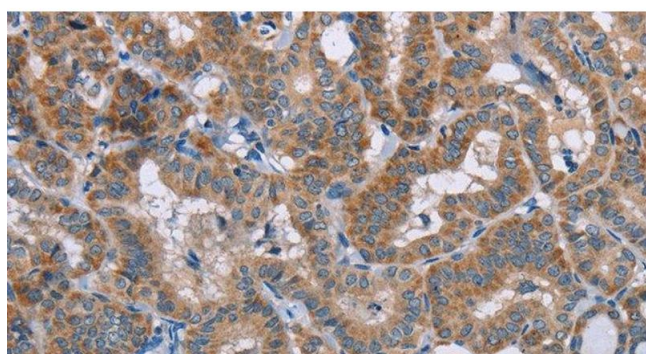
### Immunohistochemistry (Paraffin-embedded Sections)

**Image 1.** Immunohistochemistry of paraffin-embedded Human brain using POMT1 Polyclonal Antibody at dilution of 1:50



#### Western Blotting

**Image 2.** Western Blot analysis of Human testis tissue using POMT1 Polyclonal Antibody at dilution of 1:200



#### Immunohistochemistry (Paraffin-embedded Sections)

**Image 3.** Immunohistochemistry of paraffin-embedded Human thyroid cancer using POMT1 Polyclonal Antibody at dilution of 1:50