

Datasheet for ABIN7243781  
**anti-PTGER2 antibody**



[Go to Product page](#)

3 Images

### Overview

Quantity:	200 µL
Target:	PTGER2
Reactivity:	Human, Mouse
Host:	Rabbit
Clonality:	Polyclonal
Conjugate:	This PTGER2 antibody is un-conjugated
Application:	Western Blotting (WB), ELISA, Immunohistochemistry (IHC)

### Product Details

Immunogen:	Synthetic peptide of human PTGER2
Isotype:	IgG
Characteristics:	Polyclonal Antibody
Purification:	Affinity purification

### Target Details

Target:	PTGER2
Alternative Name:	PTGER2 ( <a href="#">PTGER2 Products</a> )
Background:	This gene encodes a receptor for prostaglandin E2, a metabolite of arachidonic acid which has different biologic activities in a wide range of tissues. Mutations in this gene are associated with aspirin-induced susceptibility to asthma.

## Target Details

Molecular Weight: 40 kDa

NCBI Accession: [NP\\_000947](#)

UniProt: [P43116](#)

## Application Details

Application Notes: WB 1:200-1:1000, IHC 1:50-1:200

Restrictions: For Research Use only

## Handling

Format: Liquid

Concentration: 1 mg/mL

Buffer: PBS with 0.05 % sodium azide and 50 % glycerol, PH7.4

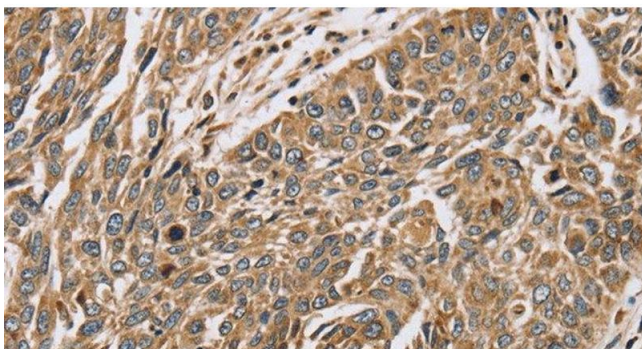
Preservative: Sodium azide

Precaution of Use: This product contains Sodium azide: a POISONOUS AND HAZARDOUS SUBSTANCE which should be handled by trained staff only.

Storage: -20 °C

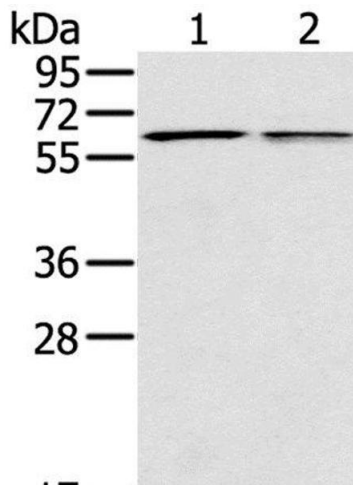
Storage Comment: Store at -20°C. Avoid freeze / thaw cycles.

## Images



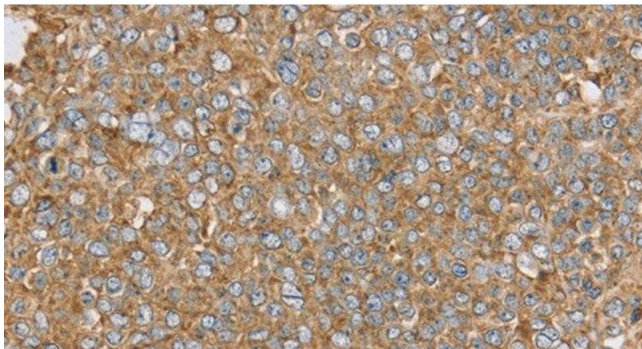
### Immunohistochemistry (Paraffin-embedded Sections)

**Image 1.** Immunohistochemistry of paraffin-embedded Human lung cancer using PTGER2 Polyclonal Antibody at dilution of 1:45



#### Western Blotting

**Image 2.** Western Blot analysis of Mouse liver and lung tissue using PTGER2 Polyclonal Antibody at dilution of 1:200



#### Immunohistochemistry (Paraffin-embedded Sections)

**Image 3.** Immunohistochemistry of paraffin-embedded Human ovarian cancer using PTGER2 Polyclonal Antibody at dilution of 1:45