

Datasheet for ABIN7243784

**anti-CENPV antibody****3** Images[Go to Product page](#)

## Overview

Quantity:	200 µL
Target:	CENPV
Reactivity:	Human, Mouse
Host:	Rabbit
Clonality:	Polyclonal
Conjugate:	This CENPV antibody is un-conjugated
Application:	Western Blotting (WB), ELISA, Immunohistochemistry (IHC)

## Product Details

Immunogen:	Synthetic peptide of human CENPV
Isotype:	IgG
Characteristics:	Polyclonal Antibody
Purification:	Affinity purification

## Target Details

Target:	CENPV
Alternative Name:	CENPV ( <a href="#">CENPV Products</a> )
Background:	CENPV orthologs were detected in a range of species, including plants, but the proline-rich region was detected only in primates, rodents, birds, and amphibians, and long proline stretches were found only in primates. Northern blot analysis showed ubiquitous CENPV expression in mouse tissues, with highest expression in testis, followed by small intestine, brain, and kidney.

## Target Details

Immunofluorescence microscopy of mouse fibroblasts revealed colocalization of Cenpv with stabilized cytoplasmic microtubules. Western blot analysis of Ramos B cells detected CENPV at an apparent molecular mass of 40 kD.

Molecular Weight: 30 kDa

NCBI Accession: [NP\\_859067](#)

UniProt: [Q7Z7K6](#)

## Application Details

Application Notes: WB 1:500-1:2000, IHC 1:50-1:200

Restrictions: For Research Use only

## Handling

Format: Liquid

Concentration: 0.5 mg/mL

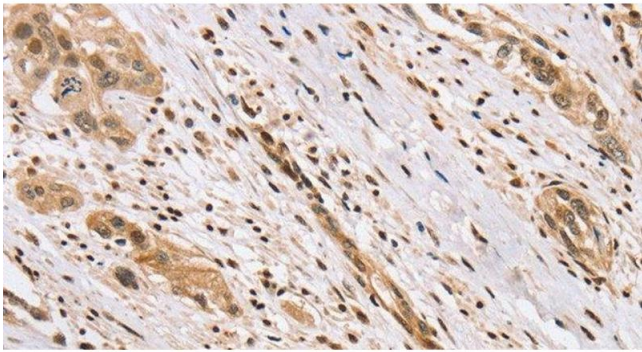
Buffer: PBS with 0.05 % sodium azide and 50 % glycerol, PH7.4

Preservative: Sodium azide

Precaution of Use: This product contains Sodium azide: a POISONOUS AND HAZARDOUS SUBSTANCE which should be handled by trained staff only.

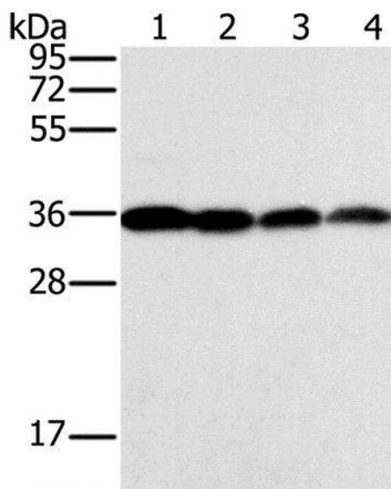
Storage: -20 °C

Storage Comment: Store at -20°C. Avoid freeze / thaw cycles.



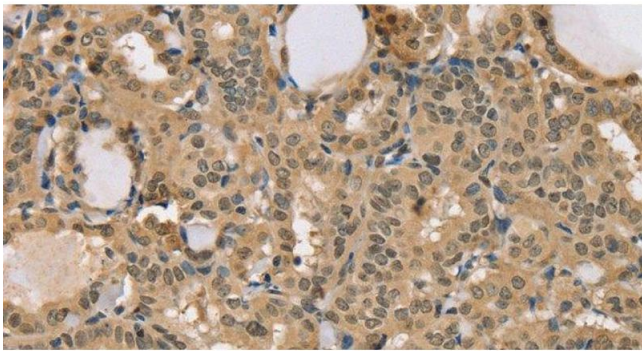
**Immunohistochemistry (Paraffin-embedded Sections)**

**Image 1.** Immunohistochemistry of paraffin-embedded Human esophagus cancer using CENPV Polyclonal Antibody at dilution of 1:40



**Western Blotting**

**Image 2.** Western Blot analysis of Raji, Jurkat, 293T and HeLa cell using CENPV Polyclonal Antibody at dilution of 1:200



**Immunohistochemistry (Paraffin-embedded Sections)**

**Image 3.** Immunohistochemistry of paraffin-embedded Human thyroid cancer using CENPV Polyclonal Antibody at dilution of 1:40