



[Go to Product page](#)

Datasheet for ABIN7243787
anti-Cytohesin 1 antibody

2 Images

Overview

Quantity:	200 µL
Target:	Cytohesin 1 (CYTH1)
Reactivity:	Human, Mouse, Rat
Host:	Rabbit
Clonality:	Polyclonal
Conjugate:	This Cytohesin 1 antibody is un-conjugated
Application:	Western Blotting (WB), ELISA, Immunohistochemistry (IHC)

Product Details

Immunogen:	Synthetic peptide of human CYTH1
Isotype:	IgG
Characteristics:	Polyclonal Antibody
Purification:	Affinity purification

Target Details

Target:	Cytohesin 1 (CYTH1)
Alternative Name:	CYTH1 (CYTH1 Products)
Background:	The protein encoded by this gene is a member of the PSCD family. Members of this family have identical structural organization that consists of an N-terminal coiled-coil motif, a central Sec7 domain, and a C-terminal pleckstrin homology (PH) domain. The coiled-coil motif is involved in homodimerization, the Sec7 domain contains guanine-nucleotide exchange protein activity, and

Target Details

the PH domain interacts with phospholipids and is responsible for association of PSCDs with membranes.

Molecular Weight: 46 kDa

NCBI Accession: [NP_004753](#)

UniProt: [Q15438](#)

Application Details

Application Notes: WB 1:500-1:2000, IHC 1:50-1:200

Restrictions: For Research Use only

Handling

Format: Liquid

Concentration: 0.5 mg/mL

Buffer: PBS with 0.05 % sodium azide and 50 % glycerol, PH7.4

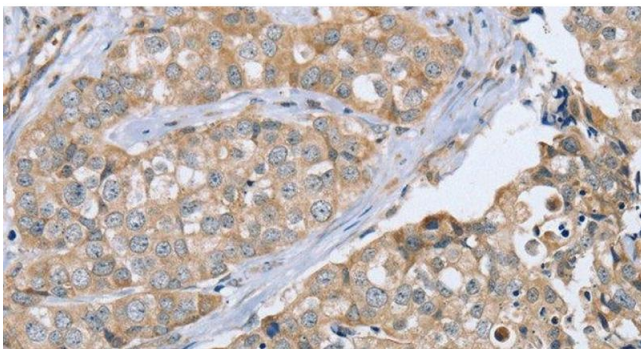
Preservative: Sodium azide

Precaution of Use: This product contains Sodium azide: a POISONOUS AND HAZARDOUS SUBSTANCE which should be handled by trained staff only.

Storage: -20 °C

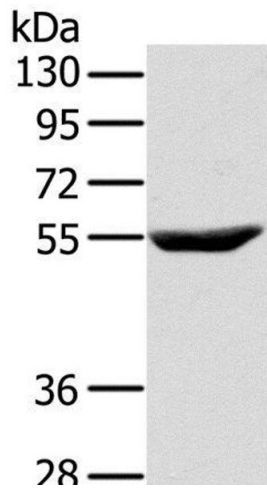
Storage Comment: Store at -20°C. Avoid freeze / thaw cycles.

Images



Immunohistochemistry (Paraffin-embedded Sections)

Image 1. Immunohistochemistry of paraffin-embedded Human breast cancer using CYTH1 Polyclonal Antibody at dilution of 1:40



Western Blotting

Image 2. Western Blot analysis of Raji cell using CYTH1 Polyclonal Antibody at dilution of 1:200