

Datasheet for ABIN7243790

anti-PTPN20 antibody

3 Images

[Go to Product page](#)

Overview

Quantity:	200 µL
Target:	PTPN20 (PTPN20B)
Reactivity:	Human
Host:	Rabbit
Clonality:	Polyclonal
Conjugate:	This PTPN20 antibody is un-conjugated
Application:	Immunohistochemistry (IHC), ELISA, Western Blotting (WB)

Product Details

Immunogen:	Synthetic peptide of human PTPN20B
Isotype:	IgG
Characteristics:	Polyclonal Antibody
Purification:	Affinity purification

Target Details

Target:	PTPN20 (PTPN20B)
Alternative Name:	PTPN20 (PTPN20B Products)
Background:	<p>The product of this gene belongs to the family of classical tyrosine-specific protein tyrosine phosphatases. Many protein tyrosine phosphatases have been shown to regulate fundamental cellular processes. The encoded protein appears to be targeted to sites of actin polymerization.</p> <p>A pseudogene of this gene has been defined on chromosome 10. Alternative splicing results in</p>

Target Details

multiple transcript variants.

Molecular Weight: 48 kDa

NCBI Accession: [NP_001035816](#)

UniProt: [Q4JDL3](#)

Application Details

Application Notes: WB 1:500-1:2000, IHC 1:50-1:300

Restrictions: For Research Use only

Handling

Format: Liquid

Concentration: 0.4 mg/mL

Buffer: PBS with 0.05 % sodium azide and 50 % glycerol, PH7.4

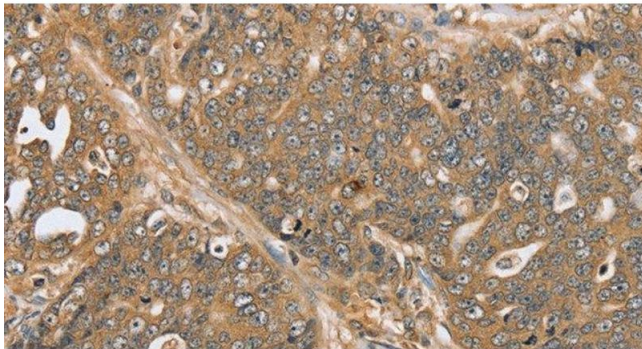
Preservative: Sodium azide

Precaution of Use: This product contains Sodium azide: a POISONOUS AND HAZARDOUS SUBSTANCE which should be handled by trained staff only.

Storage: -20 °C

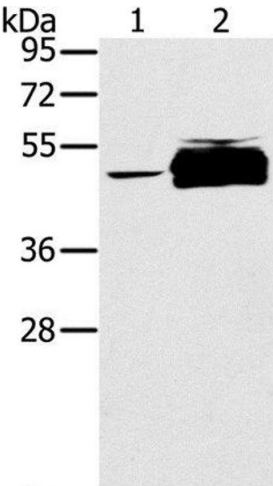
Storage Comment: Store at -20°C. Avoid freeze / thaw cycles.

Images



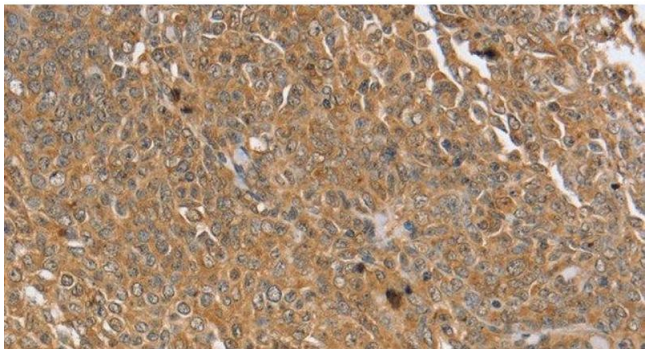
Immunohistochemistry (Paraffin-embedded Sections)

Image 1. Immunohistochemistry of paraffin-embedded Human ovarian cancer using PTPN20 Polyclonal Antibody at dilution of 1:30



Western Blotting

Image 2. Western Blot analysis of K562 cell and Human testis tissue using PTPN20 Polyclonal Antibody at dilution of 1:200



Immunohistochemistry (Paraffin-embedded Sections)

Image 3. Immunohistochemistry of paraffin-embedded Human cervical cancer using PTPN20 Polyclonal Antibody at dilution of 1:30