

Datasheet for ABIN7243904

anti-SDC3 antibody[Go to Product page](#)**1** Image

Overview

Quantity:	200 µL
Target:	SDC3
Reactivity:	Human, Mouse, Rat
Host:	Rabbit
Clonality:	Polyclonal
Conjugate:	This SDC3 antibody is un-conjugated
Application:	ELISA, Immunohistochemistry (IHC)

Product Details

Immunogen:	Synthetic peptide of human SDC3
Isotype:	IgG
Characteristics:	Polyclonal Antibody
Purification:	Affinity purification

Target Details

Target:	SDC3
Alternative Name:	SDC3 (SDC3 Products)
Background:	The protein encoded by this gene belongs to the syndecan proteoglycan family. It may play a role in the organization of cell shape by affecting the actin cytoskeleton, possibly by transferring signals from the cell surface in a sugar-dependent mechanism. Allelic variants of this gene have been associated with obesity.

Target Details

NCBI Accession:	NP_055469
UniProt:	O75056
Pathways:	Glycosaminoglycan Metabolic Process

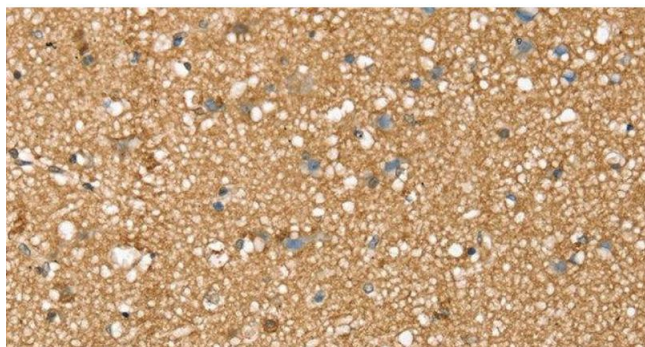
Application Details

Application Notes:	IHC 1:40-1:150
Restrictions:	For Research Use only

Handling

Format:	Liquid
Concentration:	1.1 mg/mL
Buffer:	PBS with 0.05 % sodium azide and 50 % glycerol, PH7.4
Preservative:	Sodium azide
Precaution of Use:	This product contains Sodium azide: a POISONOUS AND HAZARDOUS SUBSTANCE which should be handled by trained staff only.
Storage:	-20 °C
Storage Comment:	Store at -20°C. Avoid freeze / thaw cycles.

Images



Immunohistochemistry (Paraffin-embedded Sections)

Image 1. Immunohistochemistry of paraffin-embedded Human brain tissue using SDC3 Polyclonal Antibody at dilution 1:45