



Datasheet for ABIN7243925 anti-TRIM62 antibody



[Go to Product page](#)

3 Images

Overview

Quantity:	200 µL
Target:	TRIM62
Reactivity:	Human
Host:	Rabbit
Clonality:	Polyclonal
Conjugate:	This TRIM62 antibody is un-conjugated
Application:	Western Blotting (WB), ELISA, Immunohistochemistry (IHC)

Product Details

Immunogen:	Synthetic peptide of human TRIM62
Isotype:	IgG
Characteristics:	Polyclonal Antibody
Purification:	Affinity purification

Target Details

Target:	TRIM62
Alternative Name:	TRIM62 (TRIM62 Products)
Background:	TRIM62 (tripartite motif-containing 62) is a 475 amino acid protein that belongs to the TRIM/RBCC (Ring finger, B box, coiled-coil) family. TRIM62 contains one B box-type zinc finger, one SPRY domain and one RING-type zinc finger, a motif that has zinc-chelating activity and is involved in mediating protein-protein and protein-DNA interactions. As a member of the

Target Details

TRIM/RBCC family, TRIM62 may function in transcriptional regulation, cell transformation and carcinogenesis. In addition, TRIM62 expression can affect the entry of murine leukemia virus (MLV) and human immunodeficiency virus 1 (HIV).

Molecular Weight: 54 kDa

NCBI Accession: [NP_060677](#)

UniProt: [Q9BVG3](#)

Application Details

Application Notes: WB 1:500-1:2000, IHC 1:25-1:100

Restrictions: For Research Use only

Handling

Format: Liquid

Concentration: 0.2 mg/mL

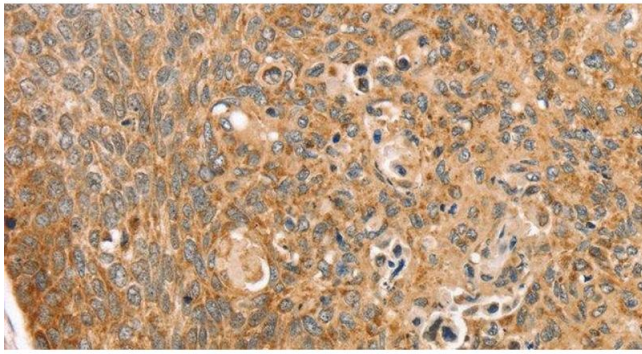
Buffer: PBS with 0.05 % sodium azide and 50 % glycerol, PH7.4

Preservative: Sodium azide

Precaution of Use: This product contains Sodium azide: a POISONOUS AND HAZARDOUS SUBSTANCE which should be handled by trained staff only.

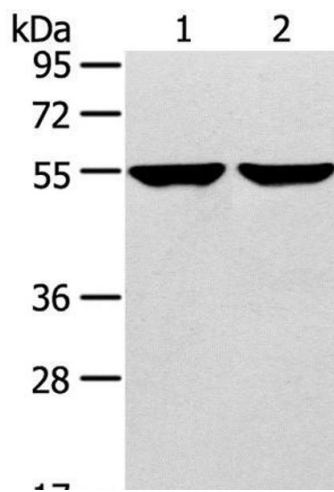
Storage: -20 °C

Storage Comment: Store at -20°C. Avoid freeze / thaw cycles.



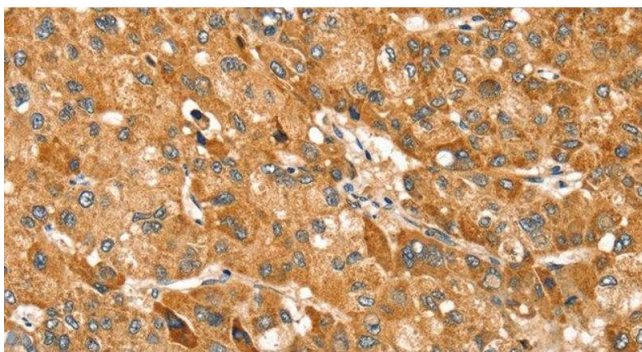
Immunohistochemistry (Paraffin-embedded Sections)

Image 1. Immunohistochemistry of paraffin-embedded Human esophagus cancer using TRIM62 Polyclonal Antibody at dilution of 1:30



Western Blotting

Image 2. Western Blot analysis of 231 and hepg2 cell using TRIM62 Polyclonal Antibody at dilution of 1:400



Immunohistochemistry (Paraffin-embedded Sections)

Image 3. Immunohistochemistry of paraffin-embedded Human liver cancer using TRIM62 Polyclonal Antibody at dilution of 1:30