

Datasheet for ABIN7243934
anti-TMEM166 antibody[Go to Product page](#)

3 Images

Overview

Quantity:	200 µL
Target:	TMEM166 (FAM176A)
Reactivity:	Human, Mouse
Host:	Rabbit
Clonality:	Polyclonal
Conjugate:	This TMEM166 antibody is un-conjugated
Application:	Western Blotting (WB), Immunohistochemistry (IHC), ELISA

Product Details

Immunogen:	Synthetic peptide of human EVA1A
Isotype:	IgG
Characteristics:	Polyclonal Antibody
Purification:	Affinity purification

Target Details

Target:	TMEM166 (FAM176A)
Alternative Name:	EVA1A (FAM176A Products)
Background:	TMEM166, also known as FAM176A (family with sequence similarity 176, member A), is a 152 amino acid protein encoded by a gene mapping to human chromosome 2. The second largest human chromosome, 2 consists of 237 million bases encoding over 1,400 genes and making up approximately 8 % of the human genome. A number of genetic diseases are linked to genes

Target Details

on chromosome 2. Harlequin ichthyosis, a rare and morbid skin deformity, is associated with Human, Mouse mutations in the ABCA12 gene.

Molecular Weight: 17 kDa

NCBI Accession: [NP_115557](#)

UniProt: [Q9H8M9](#)

Application Details

Application Notes: WB 1:200-1:1000, IHC 1:25-1:100

Restrictions: For Research Use only

Handling

Format: Liquid

Concentration: 0.7 mg/mL

Buffer: PBS with 0.05 % sodium azide and 50 % glycerol, PH7.4

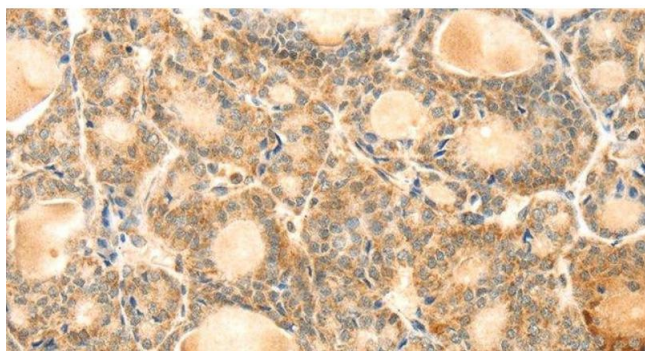
Preservative: Sodium azide

Precaution of Use: This product contains Sodium azide: a POISONOUS AND HAZARDOUS SUBSTANCE which should be handled by trained staff only.

Storage: -20 °C

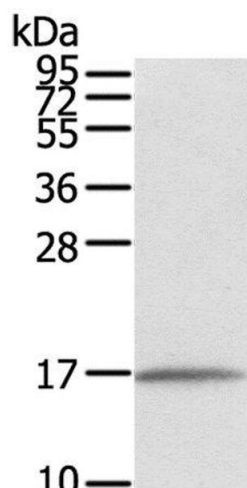
Storage Comment: Store at -20°C. Avoid freeze / thaw cycles.

Images



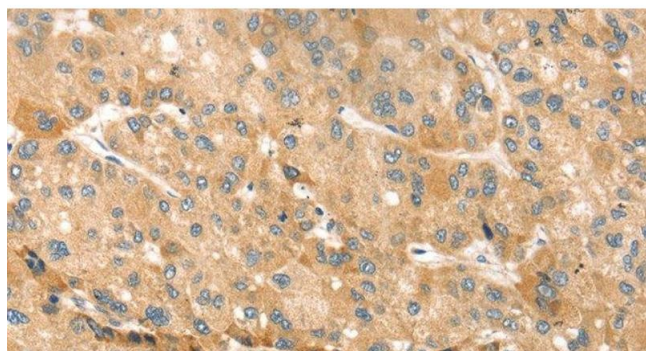
Immunohistochemistry (Paraffin-embedded Sections)

Image 1. Immunohistochemistry of paraffin-embedded Human thyroid cancer using EVA1A Polyclonal Antibody at dilution of 1:30



Western Blotting

Image 2. Western Blot analysis of Human normal liver tissue using EVA1A Polyclonal Antibody at dilution of 1:550



Immunohistochemistry (Paraffin-embedded Sections)

Image 3. Immunohistochemistry of paraffin-embedded Human liver cancer using EVA1A Polyclonal Antibody at dilution of 1:30