

Datasheet for ABIN7243943

**anti-TNFSF15 antibody**

3 Images

[Go to Product page](#)

## Overview

Quantity:	200 µL
Target:	TNFSF15
Reactivity:	Human, Mouse, Rat
Host:	Rabbit
Clonality:	Polyclonal
Conjugate:	This TNFSF15 antibody is un-conjugated
Application:	Western Blotting (WB), ELISA, Immunohistochemistry (IHC)

## Product Details

Immunogen:	Synthetic peptide of human TNFSF15
Isotype:	IgG
Characteristics:	Polyclonal Antibody
Purification:	Affinity purification

## Target Details

Target:	TNFSF15
Alternative Name:	TNFSF15 ( <a href="#">TNFSF15 Products</a> )
Background:	The protein encoded by this gene is a cytokine that belongs to the tumor necrosis factor (TNF) ligand family. This protein is abundantly expressed in endothelial cells, but is not expressed in either B or T cells. The expression of this protein is inducible by TNF and IL-1 alpha. This cytokine is a ligand for receptor TNFRSF25 and decoy receptor TNFRSF21/DR6. It can activate

## Target Details

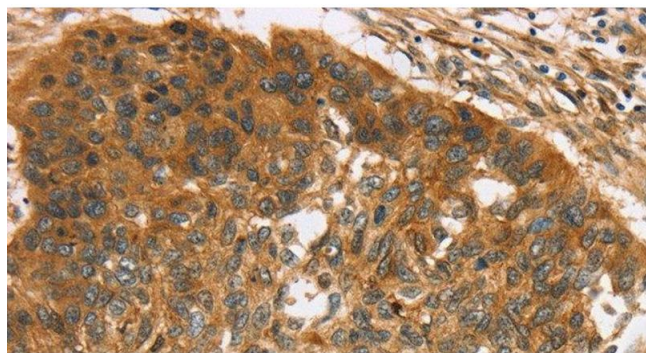
	NF-kappaB and MAP kinases, and acts as an autocrine factor to induce apoptosis in endothelial cells.
Molecular Weight:	28 kDa
NCBI Accession:	<a href="#">NP_005109</a>
UniProt:	<a href="#">O95150</a>
Pathways:	<a href="#">Positive Regulation of Endopeptidase Activity</a> , <a href="#">Autophagy</a>

## Application Details

Application Notes:	WB 1:200-1:1000, IHC 1:30-1:150
Restrictions:	For Research Use only

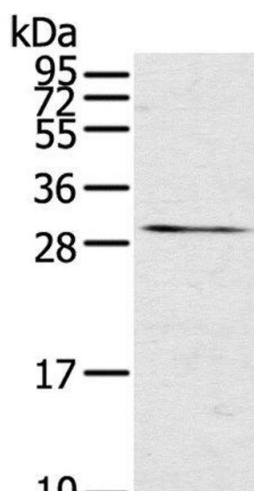
## Handling

Format:	Liquid
Concentration:	0.7 mg/mL
Buffer:	PBS with 0.05 % sodium azide and 50 % glycerol, PH7.4
Preservative:	Sodium azide
Precaution of Use:	This product contains Sodium azide: a POISONOUS AND HAZARDOUS SUBSTANCE which should be handled by trained staff only.
Storage:	-20 °C
Storage Comment:	Store at -20°C. Avoid freeze / thaw cycles.



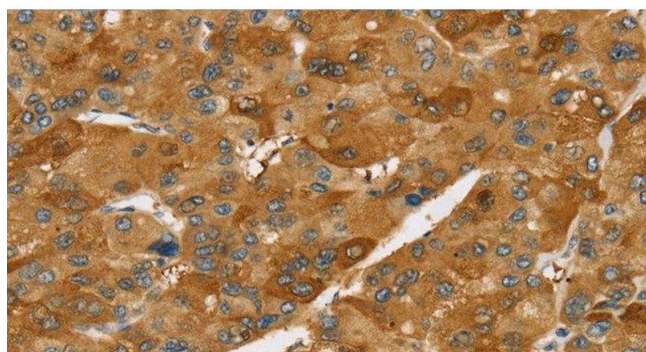
#### Immunohistochemistry (Paraffin-embedded Sections)

**Image 1.** Immunohistochemistry of paraffin-embedded Human esophagus cancer using TNFSF15 Polyclonal Antibody at dilution of 1:40



#### Western Blotting

**Image 2.** Western Blot analysis of Mouse kidney tissue using TNFSF15 Polyclonal Antibody at dilution of 1:600



#### Immunohistochemistry (Paraffin-embedded Sections)

**Image 3.** Immunohistochemistry of paraffin-embedded Human liver cancer using TNFSF15 Polyclonal Antibody at dilution of 1:40