

Datasheet for ABIN7243955

anti-SMAD4 antibody

3 Images

[Go to Product page](#)

Overview

Quantity:	200 µL
Target:	SMAD4
Reactivity:	Human, Mouse, Rat
Host:	Rabbit
Clonality:	Polyclonal
Conjugate:	This SMAD4 antibody is un-conjugated
Application:	ELISA, Immunohistochemistry (IHC)

Product Details

Immunogen:	Fusion protein of human SMAD4
Isotype:	IgG
Characteristics:	Polyclonal Antibody
Purification:	Affinity purification

Target Details

Target:	SMAD4
Alternative Name:	SMAD4 (SMAD4 Products)
Background:	This gene encodes a member of the Smad family of signal transduction proteins. Smad proteins are phosphorylated and activated by transmembrane serine-threonine receptor kinases in response to TGF-beta signaling. The product of this gene forms homomeric complexes and heteromeric complexes with other activated Smad proteins, which then

Target Details

accumulate in the nucleus and regulate the transcription of target genes. This protein binds to DNA and recognizes an 8-bp palindromic sequence (GTCTAGAC) called the Smad-binding element (SBE). The Smad proteins are subject to complex regulation by post-translational modifications. Mutations or deletions in this gene have been shown to result in pancreatic cancer, juvenile polyposis syndrome, and hereditary hemorrhagic telangiectasia syndrome.

Molecular Weight: 60 kDa

UniProt: [Q13485](#)

Pathways: [Cell Division Cycle](#), [Chromatin Binding](#), [Autophagy](#)

Application Details

Application Notes: IHC 1:50-200, ELISA 1:1000-2000

Restrictions: For Research Use only

Handling

Format: Liquid

Concentration: 0.5 mg/mL

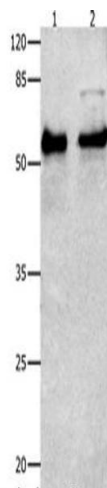
Buffer: PBS with 0.05 % sodium azide and 50 % glycerol, PH7.4

Preservative: Sodium azide

Precaution of Use: This product contains Sodium azide: a POISONOUS AND HAZARDOUS SUBSTANCE which should be handled by trained staff only.

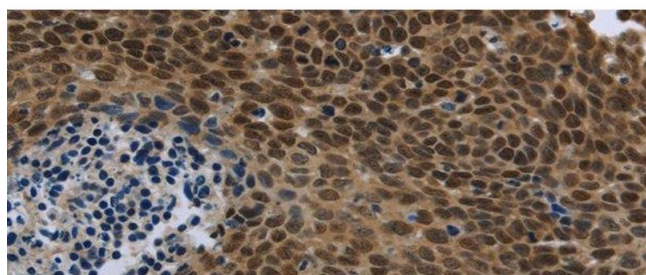
Storage: -20 °C

Storage Comment: Store at -20°C. Avoid freeze / thaw cycles.



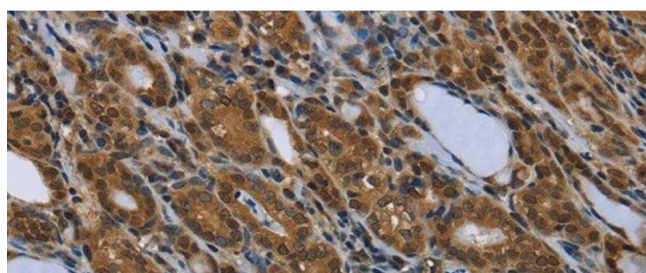
Western Blotting

Image 1. Western Blot analysis of Human liver cancer tissue and Hela cells using SMAD4 Polyclonal Antibody at dilution of 1:150



Immunohistochemistry (Paraffin-embedded Sections)

Image 2. Immunohistochemistry of paraffin-embedded Human cervical cancer using SMAD4 Polyclonal Antibody at dilution of 1/40



Immunohistochemistry (Paraffin-embedded Sections)

Image 3. Immunohistochemistry of paraffin-embedded Human thyroid cancer using SMAD4 Polyclonal Antibody at dilution of 1/40