



[Go to Product page](#)

Datasheet for ABIN7243958
anti-Cathepsin H antibody

1 Image

Overview

Quantity:	200 µL
Target:	Cathepsin H (CTSH)
Reactivity:	Human, Mouse, Rat
Host:	Rabbit
Clonality:	Polyclonal
Conjugate:	This Cathepsin H antibody is un-conjugated
Application:	ELISA, Immunohistochemistry (IHC)

Product Details

Immunogen:	Fusion protein of human CTSH
Isotype:	IgG
Characteristics:	Polyclonal Antibody
Purification:	Affinity purification

Target Details

Target:	Cathepsin H (CTSH)
Alternative Name:	Cathepsin H (CTSH Products)
Background:	The protein encoded by this gene is a lysosomal cysteine proteinase important in the overall degradation of lysosomal proteins. It is composed of a dimer of disulfide-linked heavy and light chains, both produced from a single protein precursor. The encoded protein, which belongs to the peptidase C1 protein family, can act both as an aminopeptidase and as an endopeptidase.

Target Details

Increased expression of this gene has been correlated with malignant progression of prostate tumors.

UniProt: [P09668](#)

Pathways: [Positive Regulation of Endopeptidase Activity](#)

Application Details

Application Notes: IHC 1:30-150, ELISA 1:2000-10000

Restrictions: For Research Use only

Handling

Format: Liquid

Concentration: 1 mg/mL

Buffer: PBS with 0.05 % sodium azide and 50 % glycerol, PH7.4

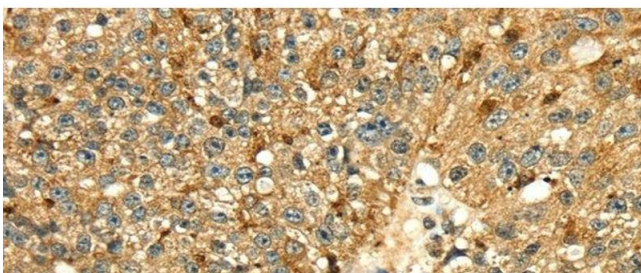
Preservative: Sodium azide

Precaution of Use: This product contains Sodium azide: a POISONOUS AND HAZARDOUS SUBSTANCE which should be handled by trained staff only.

Storage: -20 °C

Storage Comment: Store at -20°C. Avoid freeze / thaw cycles.

Images



Immunohistochemistry (Paraffin-embedded Sections)

Image 1. Immunohistochemistry of paraffin-embedded Human breast cancer tissue using Cathepsin H Polyclonal Antibody at dilution 1:50