

Datasheet for ABIN7243967

**anti-PSMD10 antibody**[Go to Product page](#)**1** Image

## Overview

Quantity:	200 µL
Target:	PSMD10
Reactivity:	Human, Mouse, Rat
Host:	Rabbit
Clonality:	Polyclonal
Conjugate:	This PSMD10 antibody is un-conjugated
Application:	ELISA, Immunohistochemistry (IHC)

## Product Details

Immunogen:	Fusion protein of human PSMD10
Isotype:	IgG
Characteristics:	Polyclonal Antibody
Purification:	Affinity purification

## Target Details

Target:	PSMD10
Alternative Name:	PSMD10 ( <a href="#">PSMD10 Products</a> )
Background:	This gene encodes a subunit of the PA700/19S complex, which is the regulatory component of the 26S proteasome. The 26S proteasome complex is required for ubiquitin-dependent protein degradation. This protein is a non-ATPase subunit that may be involved in protein-protein interactions. Aberrant expression of this gene may play a role in tumorigenesis. Two transcripts

## Target Details

encoding different isoforms have been described. Pseudogenes have been identified on chromosomes 3 and 20.

UniProt: [O75832](#)

Pathways: [Mitotic G1-G1/S Phases](#), [DNA Replication](#), [Maintenance of Protein Location](#), [Synthesis of DNA](#), [Ubiquitin Proteasome Pathway](#)

## Application Details

Application Notes: IHC 1:30-150, ELISA 1:2000-10000

Restrictions: For Research Use only

## Handling

Format: Liquid

Concentration: 0.5 mg/mL

Buffer: PBS with 0.05 % sodium azide and 50 % glycerol, PH7.4

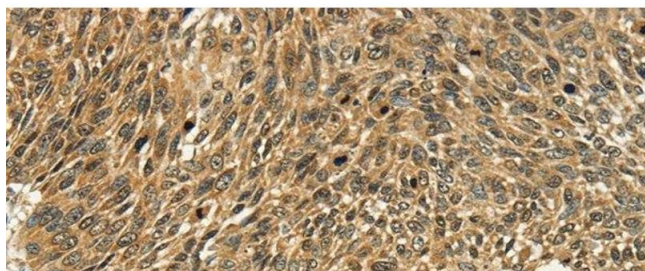
Preservative: Sodium azide

Precaution of Use: This product contains Sodium azide: a POISONOUS AND HAZARDOUS SUBSTANCE which should be handled by trained staff only.

Storage: -20 °C

Storage Comment: Store at -20°C. Avoid freeze / thaw cycles.

## Images



### Immunohistochemistry (Paraffin-embedded Sections)

**Image 1.** Immunohistochemistry of paraffin-embedded Human lung cancer tissue using PSMD10 Polyclonal Antibody at dilution 1:40