

Datasheet for ABIN7243979

**anti-RPS3 antibody****2** Images[Go to Product page](#)

## Overview

Quantity:	200 µL
Target:	RPS3
Reactivity:	Human, Mouse, Rat
Host:	Rabbit
Clonality:	Polyclonal
Conjugate:	This RPS3 antibody is un-conjugated
Application:	Western Blotting (WB), Immunohistochemistry (IHC), ELISA

## Product Details

Immunogen:	Full length fusion protein
Isotype:	IgG
Characteristics:	Polyclonal Antibody
Purification:	Affinity purification

## Target Details

Target:	RPS3
Alternative Name:	RPS3 ( <a href="#">RPS3 Products</a> )
Background:	Ribosomes, the organelles that catalyze protein synthesis, consist of a small 40S subunit and a large 60S subunit. Together these subunits are composed of 4 RNA species and approximately 80 structurally distinct proteins. This gene encodes a ribosomal protein that is a component of the 40S subunit, where it forms part of the domain where translation is initiated. The protein

## Target Details

belongs to the S3P family of ribosomal proteins. Studies of the mouse and rat proteins have demonstrated that the protein has an extraribosomal role as an endonuclease involved in the repair of UV-induced DNA damage.

Molecular Weight: 27 kDa

UniProt: [P23396](#)

Pathways: [Positive Regulation of Endopeptidase Activity](#)

## Application Details

Application Notes: WB 1:500-2000, IHC 1:25-100, ELISA 1:2000-5000

Restrictions: For Research Use only

## Handling

Format: Liquid

Concentration: 0.3 mg/mL

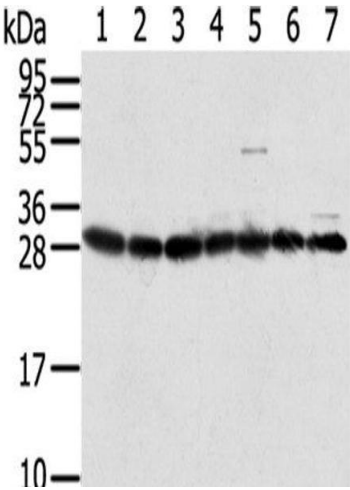
Buffer: PBS with 0.05 % sodium azide and 50 % glycerol, PH7.4

Preservative: Sodium azide

Precaution of Use: This product contains Sodium azide: a POISONOUS AND HAZARDOUS SUBSTANCE which should be handled by trained staff only.

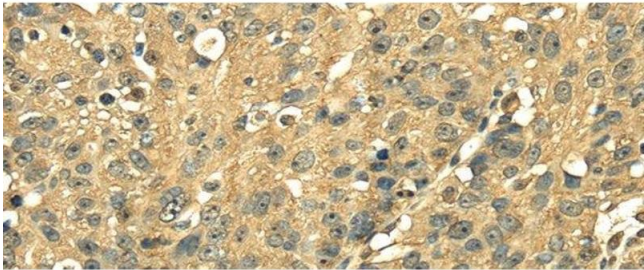
Storage: -20 °C

Storage Comment: Store at -20°C. Avoid freeze / thaw cycles.



Western Blotting

**Image 1.** Western Blot analysis of HepG2, Jurkat, Hela, Raji, RAW264.7, A549 and 293T cells using RPS3 Polyclonal Antibody at dilution of 1/350



Immunohistochemistry (Paraffin-embedded Sections)

**Image 2.** Immunohistochemistry of paraffin-embedded Human breast cancer using RPS3 Polyclonal Antibody at dilution of 1/25