

Datasheet for ABIN7244030

anti-TBL1X antibody**2** Images[Go to Product page](#)

Overview

Quantity:	200 µL
Target:	TBL1X
Reactivity:	Human, Mouse
Host:	Rabbit
Clonality:	Polyclonal
Conjugate:	This TBL1X antibody is un-conjugated
Application:	ELISA, Western Blotting (WB), Immunohistochemistry (IHC)

Product Details

Immunogen:	Fusion protein of human TBL1X
Isotype:	IgG
Characteristics:	Polyclonal Antibody
Purification:	Affinity purification

Target Details

Target:	TBL1X
Alternative Name:	TBL1X (TBL1X Products)
Background:	The protein encoded by this gene has sequence similarity with Human, Mouse members of the WD40 repeat-containing protein family. The WD40 group is a large family of proteins, which appear to have a regulatory function. It is believed that the WD40 repeats mediate protein-protein interactions and members of the family are involved in signal transduction, RNA

Target Details

	processing, gene regulation, vesicular trafficking, cytoskeletal assembly and may play a role in the control of cytotypic differentiation.
Molecular Weight:	62 kDa
UniProt:	O60907
Pathways:	Sensory Perception of Sound , Regulation of Lipid Metabolism by PPARalpha

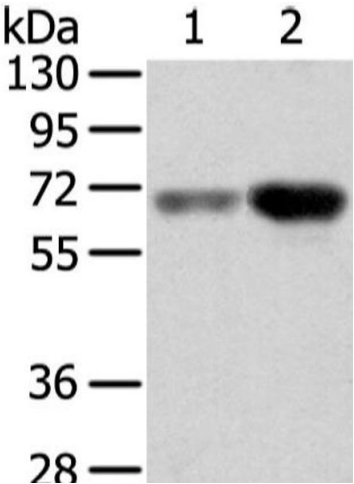
Application Details

Application Notes:	WB 1:500-2000, IHC 1:25-100, ELISA 1:2000-5000
Restrictions:	For Research Use only

Handling

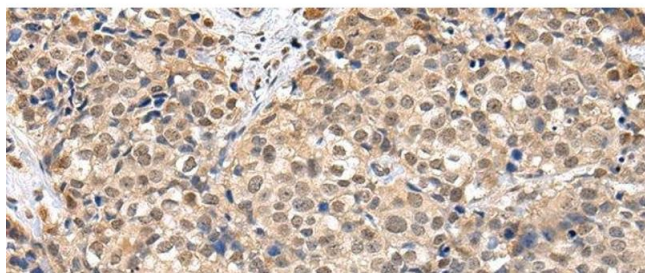
Format:	Liquid
Concentration:	1.2 mg/mL
Buffer:	PBS with 0.05 % sodium azide and 50 % glycerol, PH7.4
Preservative:	Sodium azide
Precaution of Use:	This product contains Sodium azide: a POISONOUS AND HAZARDOUS SUBSTANCE which should be handled by trained staff only.
Storage:	-20 °C
Storage Comment:	Store at -20°C. Avoid freeze / thaw cycles.

Images



Western Blotting

Image 1. Western Blot analysis of Human lung cancer and placenta tissue using TBL1X Polyclonal Antibody at dilution of 1/500



Immunohistochemistry (Paraffin-embedded Sections)

Image 2. Immunohistochemistry of paraffin-embedded Human breast cancer using TBL1X Polyclonal Antibody at dilution of 1/30