



Datasheet for ABIN7244039

anti-THAP4 antibody



[Go to Product page](#)

2 Images

Overview

| | |
|--------------|--|
| Quantity: | 200 µL |
| Target: | THAP4 |
| Reactivity: | Human, Mouse, Rat |
| Host: | Rabbit |
| Clonality: | Polyclonal |
| Conjugate: | This THAP4 antibody is un-conjugated |
| Application: | ELISA, Western Blotting (WB), Immunohistochemistry (IHC) |

Product Details

| | |
|------------------|-------------------------------|
| Immunogen: | Fusion protein of human THAP4 |
| Isotype: | IgG |
| Characteristics: | Polyclonal Antibody |
| Purification: | Affinity purification |

Target Details

| | |
|-------------------|--|
| Target: | THAP4 |
| Alternative Name: | THAP4 (THAP4 Products) |
| Background: | THAP domain-containing protein 4 is a protein that in humans is encoded by the THAP4 gene. |
| Molecular Weight: | 63 kDa |
| UniProt: | Q8WY91 |

Application Details

Application Notes: WB 1:500-2000, IHC 1:25-100, ELISA 1:2000-5000

Restrictions: For Research Use only

Handling

Format: Liquid

Concentration: 0.4 mg/mL

Buffer: PBS with 0.05 % sodium azide and 50 % glycerol, PH7.4

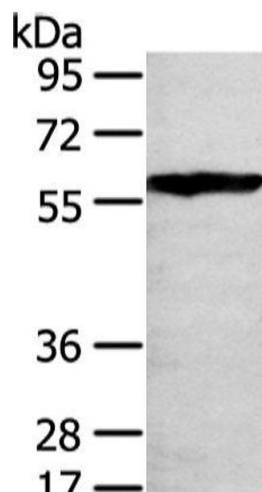
Preservative: Sodium azide

Precaution of Use: This product contains Sodium azide: a POISONOUS AND HAZARDOUS SUBSTANCE which should be handled by trained staff only.

Storage: -20 °C

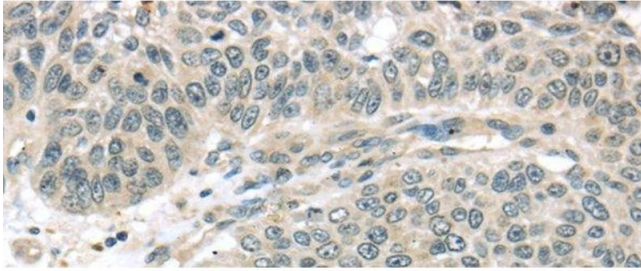
Storage Comment: Store at -20°C. Avoid freeze / thaw cycles.

Images



Western Blotting

Image 1. Western Blot analysis of 293T cell using THAP4 Polyclonal Antibody at dilution of 1/250



Immunohistochemistry (Paraffin-embedded Sections)

Image 2. Immunohistochemistry of paraffin-embedded Human lung cancer using THAP4 Polyclonal Antibody at dilution of 1/30