

Datasheet for ABIN7244054

anti-TRIM14 antibody

2 Images

[Go to Product page](#)

Overview

| | |
|--------------|--|
| Quantity: | 200 µL |
| Target: | TRIM14 |
| Reactivity: | Human, Mouse |
| Host: | Rabbit |
| Clonality: | Polyclonal |
| Conjugate: | This TRIM14 antibody is un-conjugated |
| Application: | Western Blotting (WB), ELISA, Immunohistochemistry (IHC) |

Product Details

| | |
|------------------|--------------------------------|
| Immunogen: | Fusion protein of human TRIM14 |
| Isotype: | IgG |
| Characteristics: | Polyclonal Antibody |
| Purification: | Affinity purification |

Target Details

| | |
|-------------------|--|
| Target: | TRIM14 |
| Alternative Name: | TRIM14 (TRIM14 Products) |
| Background: | The protein encoded by this gene is a member of the tripartite motif (TRIM) family. The TRIM motif includes three zinc-binding domains, a RING, a B-box type 1 and a B-box type 2, and a coiled-coil region. The protein localizes to cytoplasmic bodies and its function has not been determined. Alternative splicing results in multiple transcript variants. |

Target Details

| | |
|-------------------|------------------------|
| Molecular Weight: | 50 kDa |
| UniProt: | Q14142 |

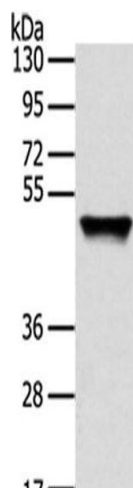
Application Details

| | |
|--------------------|--|
| Application Notes: | WB 1:500-2000, IHC 1:25-100, ELISA 1:2000-5000 |
| Restrictions: | For Research Use only |

Handling

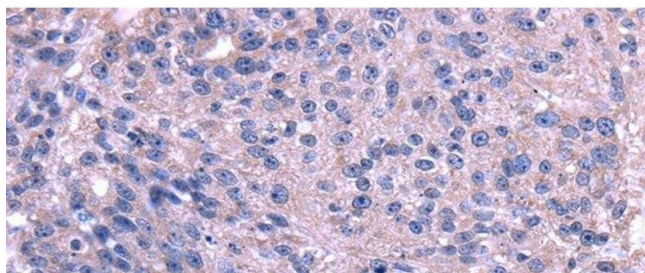
| | |
|--------------------|--|
| Format: | Liquid |
| Concentration: | 0.5 mg/mL |
| Buffer: | PBS with 0.05 % sodium azide and 50 % glycerol, PH7.4 |
| Preservative: | Sodium azide |
| Precaution of Use: | This product contains Sodium azide: a POISONOUS AND HAZARDOUS SUBSTANCE which should be handled by trained staff only. |
| Storage: | -20 °C |
| Storage Comment: | Store at -20°C. Avoid freeze / thaw cycles. |

Images



Western Blotting

Image 1. Western Blot analysis of Human fetal liver tissue using TRIM14 Polyclonal Antibody at dilution of 1/800



Immunohistochemistry (Paraffin-embedded Sections)

Image 2. Immunohistochemistry of paraffin-embedded Human breast cancer using TRIM14 Polyclonal Antibody at dilution of 1/35