

Datasheet for ABIN7244084

anti-TMED4 antibody**2** Images[Go to Product page](#)

Overview

Quantity:	200 µL
Target:	TMED4
Reactivity:	Human, Mouse
Host:	Rabbit
Clonality:	Polyclonal
Conjugate:	This TMED4 antibody is un-conjugated
Application:	ELISA, Immunohistochemistry (IHC)

Product Details

Immunogen:	Fusion protein of human TMED4
Isotype:	IgG
Characteristics:	Polyclonal Antibody
Purification:	Affinity purification

Target Details

Target:	TMED4
Alternative Name:	TMED4 (TMED4 Products)
Background:	<p>Involved in vesicular protein trafficking, mainly in the early secretory pathway. targeting.</p> <p>Involved in the maintenance of the Golgi apparatus. Appears to play a role in the biosynthesis of secreted cargo including processing. Involved in endoplasmic reticulum stress response. May play a role in the regulation of heat-shock response and apoptosis (By similarity).</p>

Target Details

Molecular Weight:	26 kDa
UniProt:	Q7Z7H5

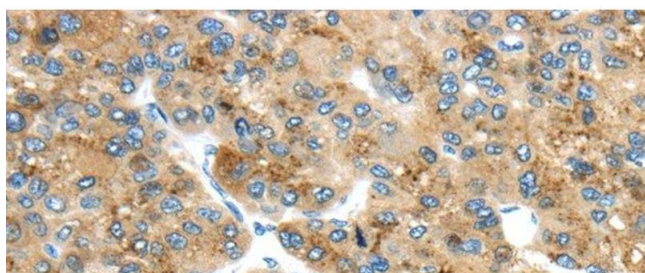
Application Details

Application Notes:	IHC 1:30-150, ELISA 1:2000-10000
Restrictions:	For Research Use only

Handling

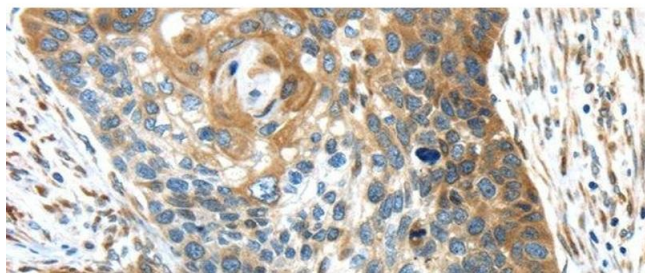
Format:	Liquid
Concentration:	0.3 mg/mL
Buffer:	PBS with 0.05 % sodium azide and 50 % glycerol, PH7.4
Preservative:	Sodium azide
Precaution of Use:	This product contains Sodium azide: a POISONOUS AND HAZARDOUS SUBSTANCE which should be handled by trained staff only.
Storage:	-20 °C
Storage Comment:	Store at -20°C. Avoid freeze / thaw cycles.

Images



Immunohistochemistry (Paraffin-embedded Sections)

Image 1. Immunohistochemistry of paraffin-embedded Human liver cancer using TMED4 Polyclonal Antibody at dilution of 1/45



Immunohistochemistry (Paraffin-embedded Sections)

Image 2. Immunohistochemistry of paraffin-embedded Human esophagus cancer using TMED4 Polyclonal Antibody at dilution of 1/45