

Datasheet for ABIN7244123

anti-TRIB2 antibody**2** Images[Go to Product page](#)

Overview

Quantity:	200 µL
Target:	TRIB2
Reactivity:	Human, Mouse
Host:	Rabbit
Clonality:	Polyclonal
Conjugate:	This TRIB2 antibody is un-conjugated
Application:	Western Blotting (WB), ELISA, Immunohistochemistry (IHC)

Product Details

Immunogen:	Full length fusion protein
Isotype:	IgG
Characteristics:	Polyclonal Antibody
Purification:	Affinity purification

Target Details

Target:	TRIB2
Alternative Name:	TRIB2 (TRIB2 Products)
Background:	This gene encodes one of three members of the Tribbles family. The Tribbles members share a Trb domain, which is homologous to protein serine-threonine kinases, but lacks the active site lysine and probably lacks a catalytic function. The Tribbles proteins interact and modulate the activity of signal transduction pathways in a number of physiological and pathological

Target Details

	processes.
Molecular Weight:	39 kDa
UniProt:	Q92519

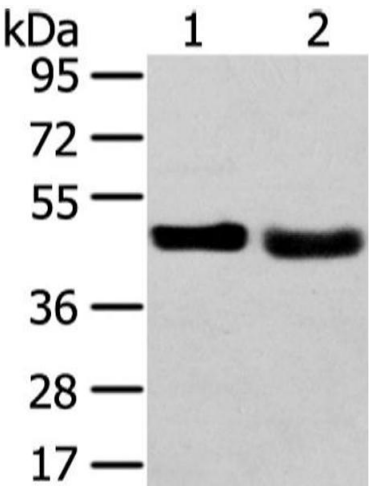
Application Details

Application Notes:	WB 1:1000-5000, IHC 1:25-100, ELISA 1:2000-10000
Restrictions:	For Research Use only

Handling

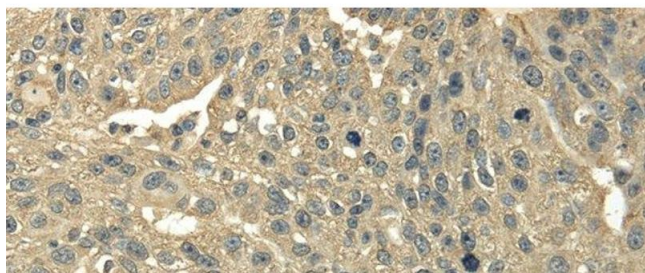
Format:	Liquid
Concentration:	0.4 mg/mL
Buffer:	PBS with 0.05 % sodium azide and 50 % glycerol, PH7.4
Preservative:	Sodium azide
Precaution of Use:	This product contains Sodium azide: a POISONOUS AND HAZARDOUS SUBSTANCE which should be handled by trained staff only.
Storage:	-20 °C
Storage Comment:	Store at -20°C. Avoid freeze / thaw cycles.

Images



Western Blotting

Image 1. Western Blot analysis of 231 cell and Human fetal liver tissue using TRIB2 Polyclonal Antibody at dilution of 1/450



Immunohistochemistry (Paraffin-embedded Sections)

Image 2. Immunohistochemistry of paraffin-embedded Human breast cancer using TRIB2 Polyclonal Antibody at dilution of 1/30