

Datasheet for ABIN7244159

anti-UBL4A antibody**2** Images[Go to Product page](#)

Overview

Quantity:	200 µL
Target:	UBL4A
Reactivity:	Human, Mouse, Rat
Host:	Rabbit
Clonality:	Polyclonal
Conjugate:	This UBL4A antibody is un-conjugated
Application:	ELISA, Immunohistochemistry (IHC)

Product Details

Immunogen:	Full length fusion protein
Isotype:	IgG
Characteristics:	Polyclonal Antibody
Purification:	Affinity purification

Target Details

Target:	UBL4A
Alternative Name:	UBL4A (UBL4A Products)
Background:	UBL4A, also known as GDX, has been characterized as a ubiquitously expressed and highly conserved protein from humans to plants. The N-terminal region of UBL4A shares 43 % sequence identity with ubiquitin, however the C-terminal region has no homology to ubiquitin and it is therefore unlikely that UBL4A plays any role in targeting cellular proteins for

Target Details

	degradation.
Molecular Weight:	18 kDa
UniProt:	P11441
Pathways:	Ubiquitin Proteasome Pathway

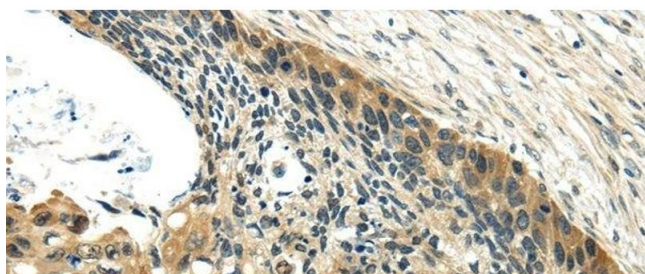
Application Details

Application Notes:	IHC 1:30-150, ELISA 1:2000-10000
Restrictions:	For Research Use only

Handling

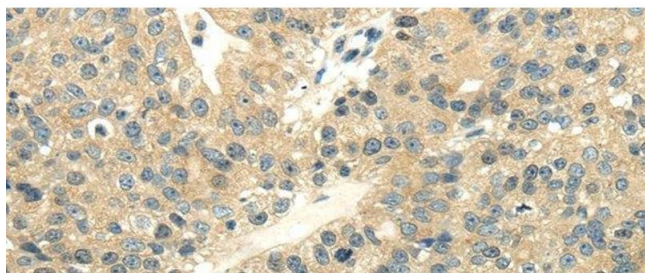
Format:	Liquid
Concentration:	0.5 mg/mL
Buffer:	PBS with 0.05 % sodium azide and 50 % glycerol, PH7.4
Preservative:	Sodium azide
Precaution of Use:	This product contains Sodium azide: a POISONOUS AND HAZARDOUS SUBSTANCE which should be handled by trained staff only.
Storage:	-20 °C
Storage Comment:	Store at -20°C. Avoid freeze / thaw cycles.

Images



Immunohistochemistry (Paraffin-embedded Sections)

Image 1. Immunohistochemistry of paraffin-embedded Human esophagus cancer using UBL4A Polyclonal Antibody at dilution of 1/40



Immunohistochemistry (Paraffin-embedded Sections)

Image 2. Immunohistochemistry of paraffin-embedded Human breast cancer using UBL4A Polyclonal Antibody at dilution of 1/40