

Datasheet for ABIN7244225

anti-FOXC1 antibody[Go to Product page](#)**1** Image

Overview

Quantity:	200 µL
Target:	FOXC1
Reactivity:	Human, Mouse
Host:	Rabbit
Clonality:	Polyclonal
Application:	Western Blotting (WB), ELISA

Product Details

Immunogen:	Synthetic peptide of human FOXC1
Isotype:	IgG
Characteristics:	Polyclonal Antibody
Purification:	Affinity purification

Target Details

Target:	FOXC1
Alternative Name:	FOXC1 (FOXC1 Products)
Background:	This gene belongs to the forkhead family of transcription factors which is characterized by a distinct DNA-binding forkhead domain. The specific function of this gene has not yet been determined, however, it has been shown to play a role in the regulation of embryonic and ocular development. Mutations in this gene cause various glaucoma phenotypes including primary congenital glaucoma, autosomal dominant iridogoniodysgenesis anomaly, and Axenfeld-Rieger

Target Details

	anomaly.
Molecular Weight:	57 kDa
NCBI Accession:	NP_001444
UniProt:	Q12948
Pathways:	Chromatin Binding , Glycosaminoglycan Metabolic Process

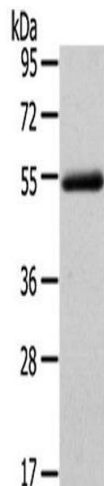
Application Details

Application Notes:	WB 1:500-2000, ELISA 1:2000-5000
Restrictions:	For Research Use only

Handling

Format:	Liquid
Concentration:	0.1 mg/mL
Buffer:	PBS with 0.05 % sodium azide and 50 % glycerol, PH7.4
Preservative:	Sodium azide
Precaution of Use:	This product contains Sodium azide: a POISONOUS AND HAZARDOUS SUBSTANCE which should be handled by trained staff only.
Storage:	-20 °C
Storage Comment:	Store at -20°C. Avoid freeze / thaw cycles.

Images



Western Blotting

Image 1. Western Blot analysis of Human normal liver tissue using FOXC1 Polyclonal Antibody at dilution of 1/400