



[Go to Product page](#)

Datasheet for ABIN7244231

anti-Growth Hormone Receptor antibody

1 Image

Overview

Quantity:	200 µL
Target:	Growth Hormone Receptor (GHR)
Reactivity:	Human, Mouse, Rat
Host:	Rabbit
Clonality:	Polyclonal
Conjugate:	This Growth Hormone Receptor antibody is un-conjugated
Application:	Western Blotting (WB), ELISA

Product Details

Immunogen:	Synthetic peptide of human GHR
Isotype:	IgG
Characteristics:	Polyclonal Antibody
Purification:	Affinity purification

Target Details

Target:	Growth Hormone Receptor (GHR)
Alternative Name:	GHR (GHR Products)
Background:	This gene encodes a member of the type I cytokine receptor family, which is a transmembrane receptor for growth hormone. Binding of growth hormone to the receptor leads to receptor dimerization and the activation of an intra- and intercellular signal transduction pathway leading to growth. Mutations in this gene have been associated with Laron syndrome, also known as

Target Details

the growth hormone insensitivity syndrome (GHIS), a disorder characterized by short stature.

Molecular Weight: 72 kDa

NCBI Accession: [NP_000154](#)

UniProt: [P10912](#)

Pathways: [NF-kappaB Signaling](#), [JAK-STAT Signaling](#), [Response to Growth Hormone Stimulus](#)

Application Details

Application Notes: WB 1:500-2000, ELISA 1:2000-5000

Restrictions: For Research Use only

Handling

Format: Liquid

Concentration: 0.3 mg/mL

Buffer: PBS with 0.05 % sodium azide and 50 % glycerol, PH7.4

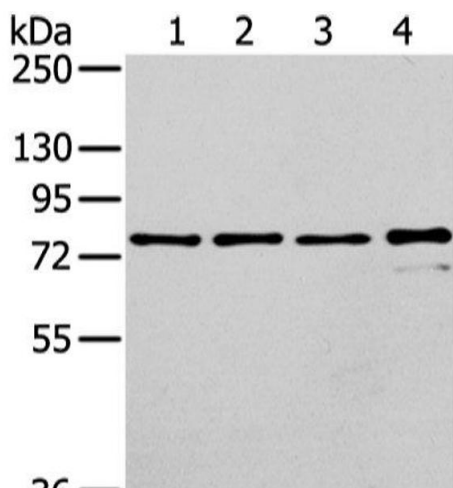
Preservative: Sodium azide

Precaution of Use: This product contains Sodium azide: a POISONOUS AND HAZARDOUS SUBSTANCE which should be handled by trained staff only.

Storage: -20 °C

Storage Comment: Store at -20°C. Avoid freeze / thaw cycles.

Images



Western Blotting

Image 1. Western Blot analysis of Raji, K562, skov3 and pc3 cell using GHR Polyclonal Antibody at dilution of 1/400