



[Go to Product page](#)

Datasheet for ABIN7244240
anti-Homeobox C6 antibody

1 Image

Overview

Quantity:	200 µL
Target:	Homeobox C6 (HOXC6)
Reactivity:	Human, Mouse
Host:	Rabbit
Clonality:	Polyclonal
Conjugate:	This Homeobox C6 antibody is un-conjugated
Application:	Western Blotting (WB), ELISA

Product Details

Immunogen:	Synthetic peptide of human HOXC6
Isotype:	IgG
Characteristics:	Polyclonal Antibody
Purification:	Affinity purification

Target Details

Target:	Homeobox C6 (HOXC6)
Alternative Name:	HOXC6 (HOXC6 Products)
Background:	This gene belongs to the homeobox family, members of which encode a highly conserved family of transcription factors that play an important role in morphogenesis in all multicellular organisms. Mammals possess four similar homeobox gene clusters, HOXA, HOXB, HOXC and HOXD, which are located on different chromosomes and consist of 9 to 11 genes arranged in

Target Details

tandem. This gene, HOXC6, is one of several HOXC genes located in a cluster on chromosome 12. Three genes, HOXC5, HOXC4 and HOXC6, share a 5' non-coding exon.

Molecular Weight: 27 kDa

NCBI Accession: [NP_004494](#)

UniProt: [P09630](#)

Application Details

Application Notes: WB 1:500-2000, ELISA 1:2000-5000

Restrictions: For Research Use only

Handling

Format: Liquid

Concentration: 0.4 mg/mL

Buffer: PBS with 0.05 % sodium azide and 50 % glycerol, PH7.4

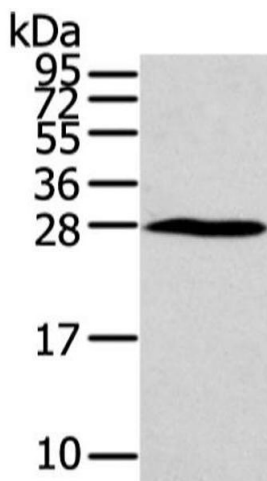
Preservative: Sodium azide

Precaution of Use: This product contains Sodium azide: a POISONOUS AND HAZARDOUS SUBSTANCE which should be handled by trained staff only.

Storage: -20 °C

Storage Comment: Store at -20°C. Avoid freeze / thaw cycles.

Images



Western Blotting

Image 1. Western Blot analysis of Huvec cell using HOXC6 Polyclonal Antibody at dilution of 1/550