

Datasheet for ABIN7244264

anti-LRP6 antibody[Go to Product page](#)**1** Image

Overview

Quantity:	200 µL
Target:	LRP6
Reactivity:	Human, Mouse
Host:	Rabbit
Clonality:	Polyclonal
Conjugate:	This LRP6 antibody is un-conjugated
Application:	Immunohistochemistry (IHC), ELISA

Product Details

Immunogen:	Synthetic peptide of human LRP6
Isotype:	IgG
Characteristics:	Polyclonal Antibody
Purification:	Affinity purification

Target Details

Target:	LRP6
Alternative Name:	LRP6 (LRP6 Products)
Background:	This gene encodes a member of the low density lipoprotein (LDL) receptor gene family. LDL receptors are transmembrane cell surface proteins involved in receptor-mediated endocytosis of lipoprotein and protein ligands. The protein encoded by this gene functions as a receptor or, with Frizzled, a co-receptor for Wnt and thereby transmits the canonical Wnt/beta-catenin

Target Details

signaling cascade. Through its interaction with the Wnt/beta-catenin signaling cascade this gene plays a role in the regulation of cell differentiation, proliferation, and migration and the development of many cancer types. This protein undergoes gamma-secretase dependent RIP- (regulated intramembrane proteolysis) processing but the precise locations of the cleavage sites have not been determined.

UniProt: [O75581](#)

Pathways: [WNT Signaling](#), [Tube Formation](#)

Application Details

Application Notes: IHC 1:40-200, ELISA 1:2000-10000

Restrictions: For Research Use only

Handling

Format: Liquid

Concentration: 1.4 mg/mL

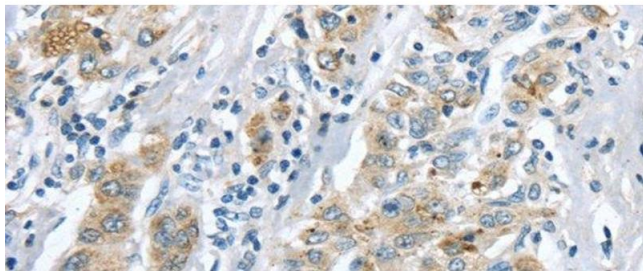
Buffer: PBS with 0.05 % sodium azide and 50 % glycerol, PH7.4

Preservative: Sodium azide

Precaution of Use: This product contains Sodium azide: a POISONOUS AND HAZARDOUS SUBSTANCE which should be handled by trained staff only.

Storage: -20 °C

Storage Comment: Store at -20°C. Avoid freeze / thaw cycles.



Immunohistochemistry (Paraffin-embedded Sections)

Image 1. Immunohistochemistry of paraffin-embedded Human liver cancer tissue using LRP6 Polyclonal Antibody at dilution 1:60