

Datasheet for ABIN7244267

anti-MAGEA6 antibody**2** Images[Go to Product page](#)

Overview

Quantity:	200 µL
Target:	MAGEA6
Reactivity:	Human
Host:	Rabbit
Clonality:	Polyclonal
Conjugate:	This MAGEA6 antibody is un-conjugated
Application:	ELISA, Immunohistochemistry (IHC)

Product Details

Immunogen:	Synthetic peptide of human MAGEA6
Isotype:	IgG
Characteristics:	Polyclonal Antibody
Purification:	Affinity purification

Target Details

Target:	MAGEA6
Alternative Name:	MAGEA6 (MAGEA6 Products)
Background:	This gene is a member of the MAGEA gene family. The members of this family encode proteins with 50 to 80 % sequence identity to each other. The promoters and first exons of the MAGEA genes show considerable variability, suggesting that the existence of this gene family enables the same function to be expressed under different transcriptional controls. The MAGEA genes

Target Details

are clustered at chromosomal location Xq28. They have been implicated in some hereditary disorders, such as dyskeratosis congenita. Alternative splicing results in multiple transcript variants.

NCBI Accession: [NP_005354](#)

UniProt: [P43360](#)

Application Details

Application Notes: IHC 1:50-200, ELISA 1:2000-10000

Restrictions: For Research Use only

Handling

Format: Liquid

Concentration: 0.9 mg/mL

Buffer: PBS with 0.05 % sodium azide and 50 % glycerol, PH7.4

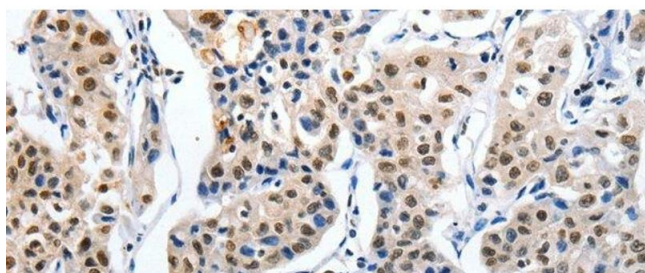
Preservative: Sodium azide

Precaution of Use: This product contains Sodium azide: a POISONOUS AND HAZARDOUS SUBSTANCE which should be handled by trained staff only.

Storage: -20 °C

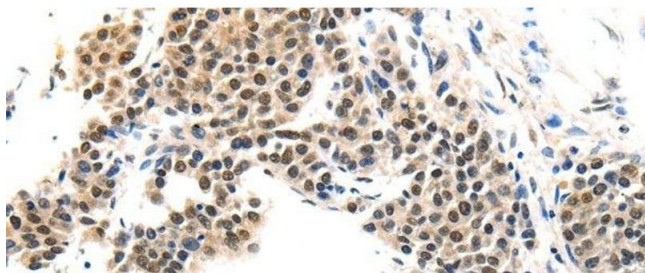
Storage Comment: Store at -20°C. Avoid freeze / thaw cycles.

Images



Immunohistochemistry (Paraffin-embedded Sections)

Image 1. Immunohistochemistry of paraffin-embedded Human lung cancer tissue using MAGEA6 Polyclonal Antibody at dilution 1:120



Immunohistochemistry (Paraffin-embedded Sections)

Image 2. Immunohistochemistry of paraffin-embedded Human liver cancer tissue using MAGEA6 Polyclonal Antibody at dilution 1:120