

Datasheet for ABIN7244270

anti-MASP2 antibody**2** Images[Go to Product page](#)

Overview

Quantity:	200 µL
Target:	MASP2
Reactivity:	Human, Mouse, Rat
Host:	Rabbit
Clonality:	Polyclonal
Conjugate:	This MASP2 antibody is un-conjugated
Application:	ELISA, Immunohistochemistry (IHC)

Product Details

Immunogen:	Synthetic peptide of human MASP2
Isotype:	IgG
Characteristics:	Polyclonal Antibody
Purification:	Affinity purification

Target Details

Target:	MASP2
Alternative Name:	MASP2 (MASP2 Products)
Background:	The Ra-reactive factor (RARF) is a complement-dependent bactericidal factor that binds to the Ra and R2 polysaccharides expressed by certain enterobacteria. Alternate splicing of this gene results in two transcript variants encoding two RARF components that are involved in the mannan-binding lectin pathway of complement activation. The longer isoform is cleaved into

Target Details

two chains which form a heterodimer linked by a disulfide bond. The encoded proteins are members of the trypsin family of peptidases.

NCBI Accession: [NP_006601](#)

UniProt: [O00187](#)

Pathways: [Complement System](#)

Application Details

Application Notes: IHC 1:25-100, ELISA 1:2000-5000

Restrictions: For Research Use only

Handling

Format: Liquid

Concentration: 1 mg/mL

Buffer: PBS with 0.05 % sodium azide and 50 % glycerol, PH7.4

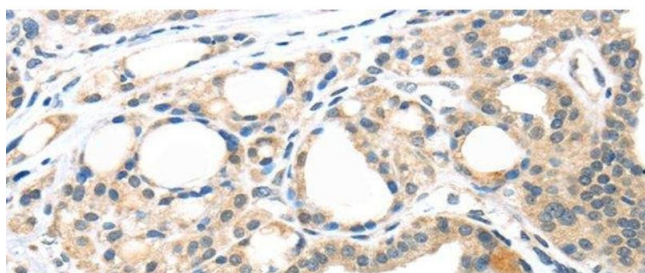
Preservative: Sodium azide

Precaution of Use: This product contains Sodium azide: a POISONOUS AND HAZARDOUS SUBSTANCE which should be handled by trained staff only.

Storage: -20 °C

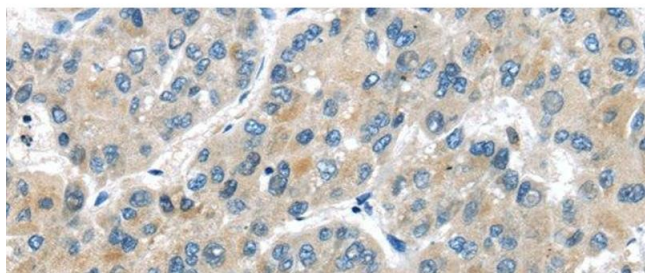
Storage Comment: Store at -20°C. Avoid freeze / thaw cycles.

Images



Immunohistochemistry (Paraffin-embedded Sections)

Image 1. Immunohistochemistry of paraffin-embedded Human thyroid cancer tissue using MASP2 Polyclonal Antibody at dilution 1:35



Immunohistochemistry (Paraffin-embedded Sections)

Image 2. Immunohistochemistry of paraffin-embedded Human liver cancer tissue using MASP2 Polyclonal Antibody at dilution 1:35