

Datasheet for ABIN7244273

anti-PIF1 antibody

1 Image



[Go to Product page](#)

Overview

Quantity:	200 µL
Target:	PIF1
Reactivity:	Human, Mouse
Host:	Rabbit
Clonality:	Polyclonal
Conjugate:	This PIF1 antibody is un-conjugated
Application:	ELISA, Western Blotting (WB)

Product Details

Immunogen:	Synthetic peptide of human PIF1
Isotype:	IgG
Characteristics:	Polyclonal Antibody
Purification:	Affinity purification

Target Details

Target:	PIF1
Alternative Name:	PIF1 (PIF1 Products)
Background:	PIF1 is a 5-prime-to-3-prime DNA helicase that negatively regulates telomerase (see TERT, MIM 187270), a reverse transcriptase that maintains telomere length. Tightly cell cycle regulated and expressed in late S/G2 phase.

Target Details

Molecular Weight: 70 kDa

NCBI Accession: [NP_079325](#)

UniProt: [Q9H611](#)

Application Details

Application Notes: WB 1:500-2000, ELISA 1:1000-5000

Restrictions: For Research Use only

Handling

Format: Liquid

Concentration: 0.2 mg/mL

Buffer: PBS with 0.05 % sodium azide and 50 % glycerol, PH7.4

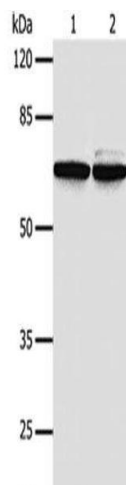
Preservative: Sodium azide

Precaution of Use: This product contains Sodium azide: a POISONOUS AND HAZARDOUS SUBSTANCE which should be handled by trained staff only.

Storage: -20 °C

Storage Comment: Store at -20°C. Avoid freeze / thaw cycles.

Images



Western Blotting

Image 1. Western Blot analysis of 293T and Hela cells using PIF1 Polyclonal Antibody at dilution of 1/500