

Datasheet for ABIN7244300

anti-THAP3 antibody

2 Images

[Go to Product page](#)

Overview

Quantity:	200 µL
Target:	THAP3
Reactivity:	Human
Host:	Rabbit
Clonality:	Polyclonal
Conjugate:	This THAP3 antibody is un-conjugated
Application:	Western Blotting (WB), Immunohistochemistry (IHC), ELISA

Product Details

Immunogen:	Synthetic peptide of human THAP3
Isotype:	IgG
Characteristics:	Polyclonal Antibody
Purification:	Affinity purification

Target Details

Target:	THAP3
Alternative Name:	THAP3 (THAP3 Products)
Background:	THAP3 (THAP domain-containing protein 3) is a 239 amino acid protein that contains one THAP-type zinc finger and exists as three alternatively spliced isoforms. The gene that encodes THAP3 contains roughly 10,721 bases and maps to human chromosome 1p36.31. Spanning about 260 million base pairs and comprising nearly 8 % of the human genome, chromosome 1

Target Details

is the largest human chromosome.

Molecular Weight: 27 kDa

NCBI Accession: [NP_001182682](#)

UniProt: [Q8WTV1](#)

Application Details

Application Notes: WB 1:500-2000, IHC 1:25-100, ELISA 1:2000-5000

Restrictions: For Research Use only

Handling

Format: Liquid

Concentration: 0.7 mg/mL

Buffer: PBS with 0.05 % sodium azide and 50 % glycerol, PH7.4

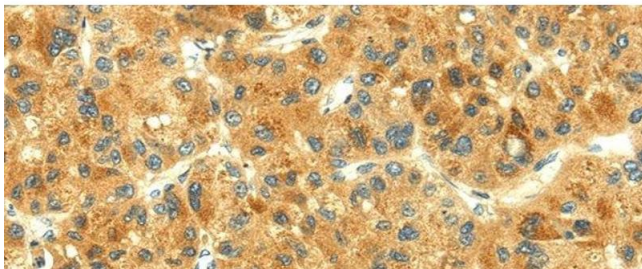
Preservative: Sodium azide

Precaution of Use: This product contains Sodium azide: a POISONOUS AND HAZARDOUS SUBSTANCE which should be handled by trained staff only.

Storage: -20 °C

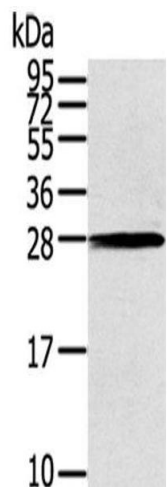
Storage Comment: Store at -20°C. Avoid freeze / thaw cycles.

Images



Immunohistochemistry (Paraffin-embedded Sections)

Image 1. Immunohistochemistry of paraffin-embedded Human liver cancer using THAP3 Polyclonal Antibody at dilution of 1/30



Western Blotting

Image 2. Western Blot analysis of 231 cells using THAP3 Polyclonal Antibody at dilution of 1/200