



[Go to Product page](#)

Datasheet for ABIN7244378

anti-UCP2 antibody

2 Images

Overview

Quantity:	200 µL
Target:	UCP2
Reactivity:	Human, Mouse, Rat
Host:	Rabbit
Clonality:	Polyclonal
Conjugate:	This UCP2 antibody is un-conjugated
Application:	Western Blotting (WB), Immunohistochemistry (IHC), ELISA

Product Details

Immunogen:	Synthetic peptide of human UCP2
Isotype:	IgG
Characteristics:	Polyclonal Antibody
Purification:	Affinity purification

Target Details

Target:	UCP2
Alternative Name:	UCP2 (UCP2 Products)
Background:	Mitochondrial uncoupling proteins (UCP) are members of the larger family of mitochondrial anion carrier proteins (MACP). UCPs separate oxidative phosphorylation from ATP synthesis with energy dissipated as heat, also referred to as the mitochondrial proton leak. UCPs facilitate the transfer of anions from the inner to the outer mitochondrial membrane and the return

Target Details

transfer of protons from the outer to the inner mitochondrial membrane. They also reduce the mitochondrial membrane potential in mammalian cells.

Molecular Weight: 33 kDa

NCBI Accession: [NP_003346](#)

UniProt: [P55851](#)

Pathways: [Negative Regulation of Hormone Secretion](#), [Carbohydrate Homeostasis](#), [Proton Transport](#)

Application Details

Application Notes: WB 1:200-1000, IHC 1:10-50, ELISA 1:1000-2000

Restrictions: For Research Use only

Handling

Format: Liquid

Concentration: 2.1 mg/mL

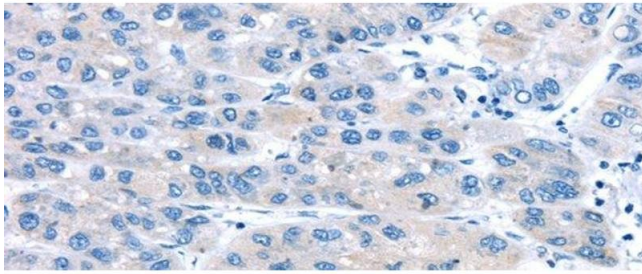
Buffer: PBS with 0.05 % sodium azide and 50 % glycerol, PH7.4

Preservative: Sodium azide

Precaution of Use: This product contains Sodium azide: a POISONOUS AND HAZARDOUS SUBSTANCE which should be handled by trained staff only.

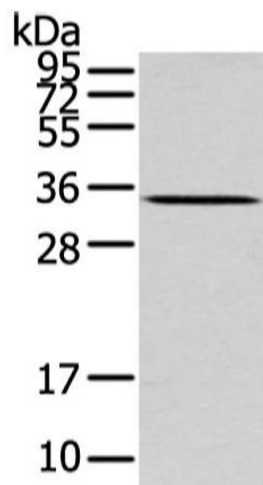
Storage: -20 °C

Storage Comment: Store at -20°C. Avoid freeze / thaw cycles.



Immunohistochemistry (Paraffin-embedded Sections)

Image 1. Immunohistochemistry of paraffin-embedded Human liver cancer using UCP2 Polyclonal Antibody at dilution of 1/20



Western Blotting

Image 2. Western Blot analysis of Mouse liver tissue using UCP2 Polyclonal Antibody at dilution of 1/200