



[Go to Product page](#)

Datasheet for ABIN7244420

## anti-VSIG10 antibody

### 2 Images

#### Overview

Quantity:	200 µL
Target:	VSIG10
Reactivity:	Human
Host:	Rabbit
Clonality:	Polyclonal
Conjugate:	This VSIG10 antibody is un-conjugated
Application:	Immunohistochemistry (IHC), ELISA

#### Product Details

Immunogen:	Synthetic peptide of human VSIG10
Isotype:	IgG
Characteristics:	Polyclonal Antibody
Purification:	Affinity purification

#### Target Details

Target:	VSIG10
Alternative Name:	VSIG10 ( <a href="#">VSIG10 Products</a> )
Background:	It is the genetic home for a number of immunoglobulin superfamily members including the killer cell and leukocyte Ig-like receptors, a number of ICAMs, the CEACAM and PSG family, and Fc receptors. Key genes for eye color and hair color also map to chromosome 19. Peutz-Jeghers syndrome, spinocerebellar ataxia type 6, the stroke disorder CADASIL,

## Target Details

---

hypercholesterolemia and insulin-dependent diabetes have been linked to chromosome 19. Translocations with chromosome 19 and chromosome 14 can be seen in some lymphoproliferative disorders and typically involve the proto-oncogene BCL3. The LOC147645 gene product has been provisionally designated LOC147645 pending further characterization.

NCBI Accession: [NP\\_061959](#)

UniProt: [Q8N0Z9](#)

## Application Details

---

Application Notes: IHC 1:30-150, ELISA 1:2000-10000

Restrictions: For Research Use only

## Handling

---

Format: Liquid

Concentration: 0.8 mg/mL

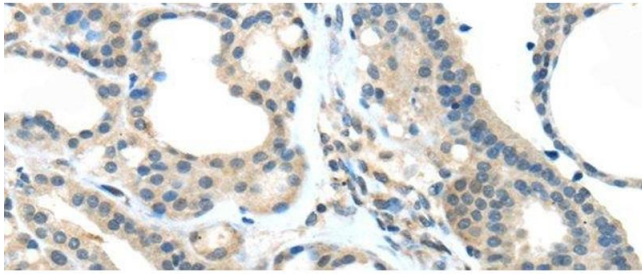
Buffer: PBS with 0.05 % sodium azide and 50 % glycerol, PH7.4

Preservative: Sodium azide

Precaution of Use: This product contains Sodium azide: a POISONOUS AND HAZARDOUS SUBSTANCE which should be handled by trained staff only.

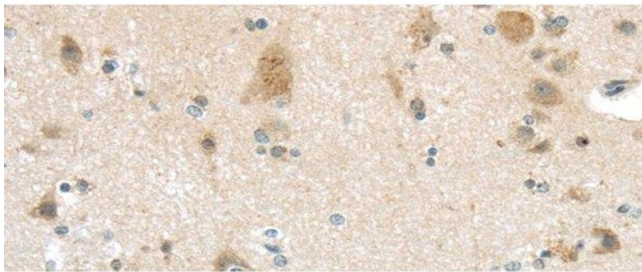
Storage: -20 °C

Storage Comment: Store at -20°C. Avoid freeze / thaw cycles.



#### Immunohistochemistry (Paraffin-embedded Sections)

**Image 1.** Immunohistochemistry of paraffin-embedded Human thyroid cancer tissue using VSIG10 Polyclonal Antibody at dilution 1:45



#### Immunohistochemistry (Paraffin-embedded Sections)

**Image 2.** Immunohistochemistry of paraffin-embedded Human brain tissue using VSIG10 Polyclonal Antibody at dilution 1:45