

Datasheet for ABIN7244441  
**anti-WNT2 antibody**

2 Images



[Go to Product page](#)

## Overview

|              |                                     |
|--------------|-------------------------------------|
| Quantity:    | 200 µL                              |
| Target:      | WNT2                                |
| Reactivity:  | Human, Mouse                        |
| Host:        | Rabbit                              |
| Clonality:   | Polyclonal                          |
| Conjugate:   | This WNT2 antibody is un-conjugated |
| Application: | Immunohistochemistry (IHC), ELISA   |

## Product Details

|                  |                                 |
|------------------|---------------------------------|
| Immunogen:       | Synthetic peptide of human WNT2 |
| Isotype:         | IgG                             |
| Characteristics: | Polyclonal Antibody             |
| Purification:    | Affinity purification           |

## Target Details

|                   |   |
|-------------------|---|
| Target:           | WNT2  |
| Alternative Name: | WNT2 ( <a href="#">WNT2 Products</a> )  |
| Background:       | This gene is a member of the WNT gene family. The WNT gene family consists of structurally related genes which encode secreted signaling proteins. These proteins have been implicated in oncogenesis and in several developmental processes, including regulation of cell fate and patterning during embryogenesis. Alternatively spliced transcript variants have been identified |

## Target Details

for this gene.

Molecular Weight: 40 kDa

NCBI Accession: [NP\\_003382](#)

UniProt: [P09544](#)

Pathways: [WNT Signaling](#)

## Application Details

Application Notes: IHC 1:30-150, ELISA 1:2000-5000

Restrictions: For Research Use only

## Handling

Format: Liquid

Concentration: 0.6 mg/mL

Buffer: PBS with 0.05 % sodium azide and 50 % glycerol, PH7.4

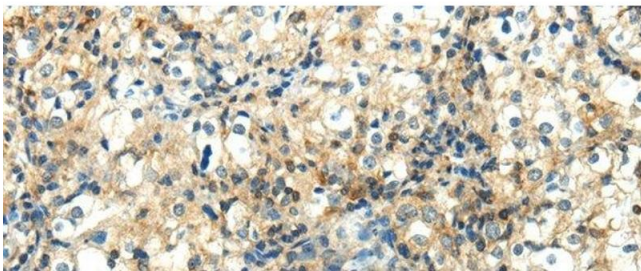
Preservative: Sodium azide

Precaution of Use: This product contains Sodium azide: a POISONOUS AND HAZARDOUS SUBSTANCE which should be handled by trained staff only.

Storage: -20 °C

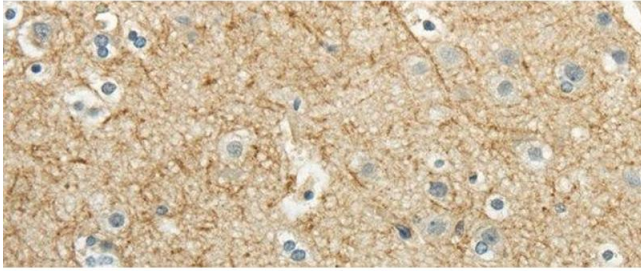
Storage Comment: Store at -20°C. Avoid freeze / thaw cycles.

## Images



### Immunohistochemistry (Paraffin-embedded Sections)

**Image 1.** Immunohistochemistry of paraffin-embedded Human prostate cancer using WNT2 Polyclonal Antibody at dilution of 1/40



### Immunohistochemistry (Paraffin-embedded Sections)

**Image 2.** Immunohistochemistry of paraffin-embedded Human brain using WNT2 Polyclonal Antibody at dilution of 1/40