

Datasheet for ABIN7244459
anti-ZNF365 antibody



[Go to Product page](#)

2 Images

Overview

Quantity:	200 µL
Target:	ZNF365
Reactivity:	Human
Host:	Rabbit
Clonality:	Polyclonal
Conjugate:	This ZNF365 antibody is un-conjugated
Application:	Western Blotting (WB), ELISA, Immunohistochemistry (IHC)

Product Details

Immunogen:	Synthetic peptide of human ZNF365
Isotype:	IgG
Characteristics:	Polyclonal Antibody
Purification:	Affinity purification

Target Details

Target:	ZNF365
Alternative Name:	ZNF365 (ZNF365 Products)
Background:	This gene encodes several isoforms which have different expression patterns and functions. Mutation in this gene is associated with uric acid nephrolithiasis (UAN). Alternatively spliced variants, encoding distinct proteins, have been identified.

Target Details

Molecular Weight:	24 kDa
NCBI Accession:	NP_955524
UniProt:	Q70YC4

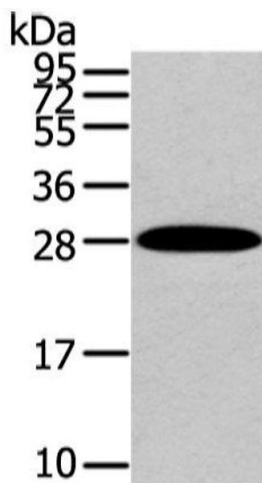
Application Details

Application Notes:	WB 1:500-2000, IHC 1:25-100, ELISA 1:2000-5000
Restrictions:	For Research Use only

Handling

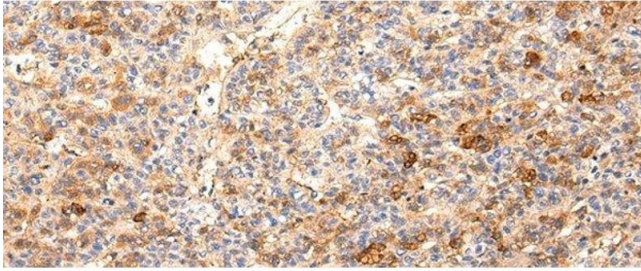
Format:	Liquid
Concentration:	0.2 mg/mL
Buffer:	PBS with 0.05 % sodium azide and 50 % glycerol, PH7.4
Preservative:	Sodium azide
Precaution of Use:	This product contains Sodium azide: a POISONOUS AND HAZARDOUS SUBSTANCE which should be handled by trained staff only.
Storage:	-20 °C
Storage Comment:	Store at -20°C. Avoid freeze / thaw cycles.

Images



Western Blotting

Image 1. Western Blot analysis of Human liver cancer tissue using ZNF365 Polyclonal Antibody at dilution of 1/200



Immunohistochemistry (Paraffin-embedded Sections)

Image 2. Immunohistochemistry of paraffin-embedded Human liver cancer using ZNF365 Polyclonal Antibody at dilution of 1/20