

Datasheet for ABIN7244495

anti-Septin 7 antibody

3 Images

[Go to Product page](#)

Overview

Quantity:	200 µL
Target:	Septin 7 (SEPT7)
Reactivity:	Human, Rat, Mouse
Host:	Rabbit
Clonality:	Polyclonal
Conjugate:	This Septin 7 antibody is un-conjugated
Application:	Western Blotting (WB), Immunohistochemistry (IHC), ELISA

Product Details

Immunogen:	Recombinant protein of human SEPT7
Isotype:	IgG
Characteristics:	Polyclonal Antibody
Purification:	Affinity purification

Target Details

Target:	Septin 7 (SEPT7)
Alternative Name:	SEPT7 (SEPT7 Products)
Background:	<p>This gene encodes a protein that is highly similar to the CDC10 protein of <i>Saccharomyces cerevisiae</i>. The protein also shares similarity with Diff 6 of <i>Drosophila</i> and with H5 of mouse. Each of these similar proteins, including the yeast CDC10, contains a GTP-binding motif. The yeast CDC10 protein is a structural component of the 10 nm filament which lies inside the</p>

Target Details

cytoplasmic membrane and is essential for cytokinesis. This human protein functions in gliomagenesis and in the suppression of glioma cell growth, and it is required for the association of centromere-associated protein E with the kinetochore. Alternative splicing results in multiple transcript variants. Several related pseudogenes have been identified on chromosomes 5, 7, 9, 10, 11, 14, 17 and 19

Molecular Weight: Observed_MW: Refer to figures
Calculated_MW: 51 kDa

UniProt: [Q16181](#)

Application Details

Application Notes: WB 1:500-1:2000, IHC 1:100-1:300

Restrictions: For Research Use only

Handling

Format: Liquid

Concentration: 0.5 mg/mL

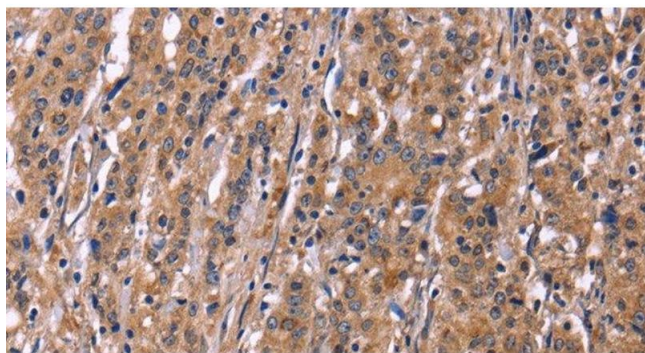
Buffer: PBS with 0.05 % sodium azide and 50 % glycerol, PH7.4

Preservative: Sodium azide

Precaution of Use: This product contains Sodium azide: a POISONOUS AND HAZARDOUS SUBSTANCE which should be handled by trained staff only.

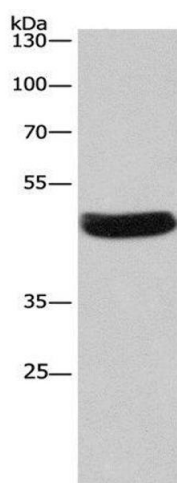
Storage: -20 °C

Storage Comment: Store at -20°C. Avoid freeze / thaw cycles.



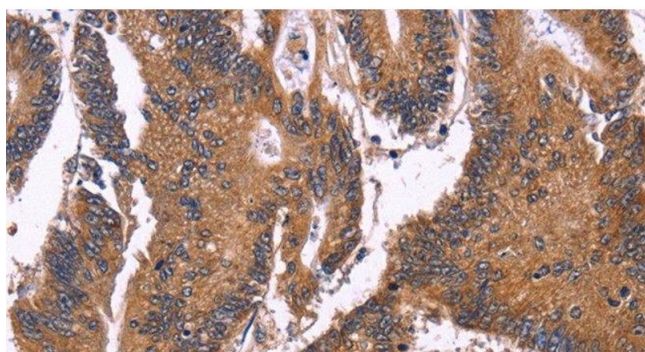
Immunohistochemistry (Paraffin-embedded Sections)

Image 1. Immunohistochemistry of paraffin-embedded Human gastric cancer using SEPT7 Polyclonal Antibody at dilution of 1:50



Western Blotting

Image 2. Western Blot analysis of Hela cell using SEPT7 Polyclonal Antibody at dilution of 1:380



Immunohistochemistry (Paraffin-embedded Sections)

Image 3. Immunohistochemistry of paraffin-embedded Human colon cancer using SEPT7 Polyclonal Antibody at dilution of 1:50