



Datasheet for ABIN7244546 anti-CHRNA3 antibody



[Go to Product page](#)

1 Image

Overview

Quantity:	200 µL
Target:	CHRNA3
Reactivity:	Human, Mouse, Rat
Host:	Rabbit
Clonality:	Polyclonal
Conjugate:	This CHRNA3 antibody is un-conjugated
Application:	Western Blotting (WB), ELISA

Product Details

Immunogen:	Synthetic peptide of human CHRNA3
Isotype:	IgG
Characteristics:	Polyclonal Antibody
Purification:	Affinity purification

Target Details

Target:	CHRNA3
Alternative Name:	CHRNA3 (CHRNA3 Products)
Background:	This locus encodes a member of the nicotinic acetylcholine receptor family of proteins. Members of this family of proteins form pentameric complexes comprised of both alpha and beta subunits. This locus encodes an alpha-type subunit, as it contains characteristic adjacent cysteine residues. The encoded protein is a ligand-gated ion channel that likely plays a role in

Target Details

neurotransmission. Polymorphisms in this gene have been associated with an increased risk of smoking initiation and an increased susceptibility to lung cancer. Alternatively spliced transcript variants have been described.

Molecular Weight: Observed_MW: Refer to figures
Calculated_MW: 55 kDa

NCBI Accession: [NP_000734](#)

UniProt: [P32297](#)

Pathways: [Synaptic Membrane](#)

Application Details

Application Notes: WB 1:1000-1:5000

Restrictions: For Research Use only

Handling

Format: Liquid

Concentration: 0.3 mg/mL

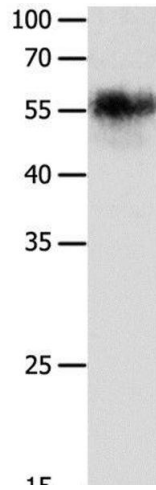
Buffer: PBS with 0.05 % sodium azide and 50 % glycerol, PH7.4

Preservative: Sodium azide

Precaution of Use: This product contains Sodium azide: a POISONOUS AND HAZARDOUS SUBSTANCE which should be handled by trained staff only.

Storage: -20 °C

Storage Comment: Store at -20°C. Avoid freeze / thaw cycles.



Western Blotting

Image 1. Western Blot analysis of HeLa cell using CHRNA3 Polyclonal Antibody at dilution of 1:600