

Datasheet for ABIN7244549

**anti-MOSC1 antibody****3** Images[Go to Product page](#)

## Overview

Quantity:	200 µL
Target:	MOSC1
Reactivity:	Human
Host:	Rabbit
Clonality:	Polyclonal
Conjugate:	This MOSC1 antibody is un-conjugated
Application:	Western Blotting (WB), Immunohistochemistry (IHC), ELISA

## Product Details

Immunogen:	Synthetic peptide of human MARC1
Isotype:	IgG
Characteristics:	Polyclonal Antibody
Purification:	Affinity purification

## Target Details

Target:	MOSC1
Alternative Name:	MARC1 ( <a href="#">MOSC1 Products</a> )
Background:	MOSC1 (MOCO sulphurase C-terminal domain containing 1), also known as MARC1, is a 337 amino acid mitochondrial protein that is thought to function as an oxidoreductase. Existing as three alternatively spliced isoforms, MOSC1 contains one MOSC domain and binds molybdenum as a cofactor. The gene encoding MOSC1 maps to human chromosome 1, which

## Target Details

spans 260 million base pairs, contains over 3,000 genes and comprises nearly 8 % of the human genome. Chromosome 1 houses a large number of disease-associated genes, including those that are involved in familial adenomatous polyposis, Stickler syndrome, Parkinson's disease, Gaucher disease, schizophrenia and Usher syndrome. Aberrations in chromosome 1 are found in a variety of cancers, including head and neck cancer, malignant melanoma and multiple myeloma.

Molecular Weight: Observed\_MW: Refer to figures  
Calculated\_MW: 37 kDa

NCBI Accession: [NP\\_073583](#)

UniProt: [Q5VT66](#)

Pathways: [SARS-CoV-2 Protein Interactome](#)

## Application Details

Application Notes: WB 1:500-1:2000, IHC 1:50-1:200

Restrictions: For Research Use only

## Handling

Format: Liquid

Concentration: 1.5 mg/mL

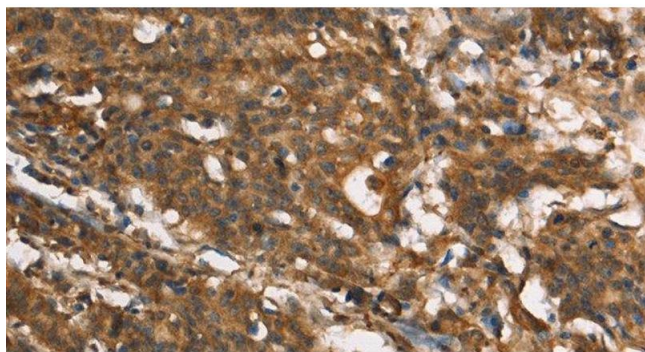
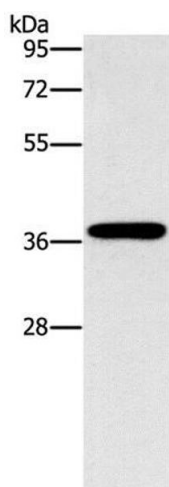
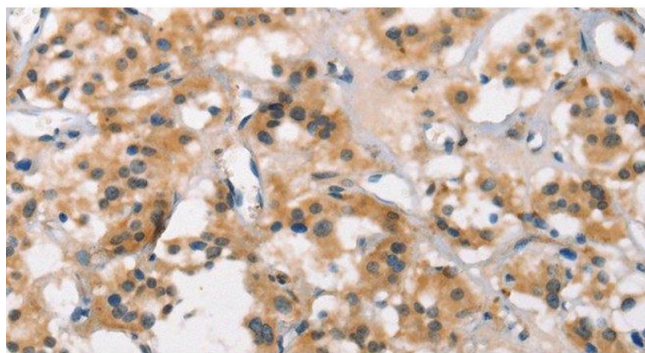
Buffer: PBS with 0.05 % sodium azide and 50 % glycerol, PH7.4

Preservative: Sodium azide

Precaution of Use: This product contains Sodium azide: a POISONOUS AND HAZARDOUS SUBSTANCE which should be handled by trained staff only.

Storage: -20 °C

Storage Comment: Store at -20°C. Avoid freeze / thaw cycles.



#### Immunohistochemistry (Paraffin-embedded Sections)

**Image 1.** Immunohistochemistry of paraffin-embedded Human thyroid cancer using MARC1 Polyclonal Antibody at dilution of 1:40

#### Western Blotting

**Image 2.** Western Blot analysis of HepG2 cell using MARC1 Polyclonal Antibody at dilution of 1:1400

#### Immunohistochemistry (Paraffin-embedded Sections)

**Image 3.** Immunohistochemistry of paraffin-embedded Human gastric cancer using MARC1 Polyclonal Antibody at dilution of 1:40