

Datasheet for ABIN7244558  
**anti-Apolipoprotein D antibody**

## 3 Images

[Go to Product page](#)

## Overview

Quantity:	200 µL
Target:	Apolipoprotein D (APOD)
Reactivity:	Human
Host:	Rabbit
Clonality:	Polyclonal
Conjugate:	This Apolipoprotein D antibody is un-conjugated
Application:	Western Blotting (WB), Immunohistochemistry (IHC), ELISA

## Product Details

Immunogen:	Synthetic peptide of human APOD
Isotype:	IgG
Characteristics:	Polyclonal Antibody
Purification:	Antigen affinity purification

## Target Details

Target:	Apolipoprotein D (APOD)
Alternative Name:	APOD ( <a href="#">APOD Products</a> )
Background:	Apolipoprotein D (ApoD) is a member of the lipocalin superfamily of ligand transporters, and has been implicated in the transport of small hydrophobic molecules. ApoD is also a component of plasma high-density lipoproteins (HDL). Alteration of ApoD expression has been linked to multiple neurological disorders, including Alzheimer's disease.

## Target Details

Molecular Weight:	Observed_MW: Refer to figures Calculated_MW: 21 kDa
UniProt:	<a href="#">P05090</a>
Pathways:	<a href="#">Platelet-derived growth Factor Receptor Signaling</a>

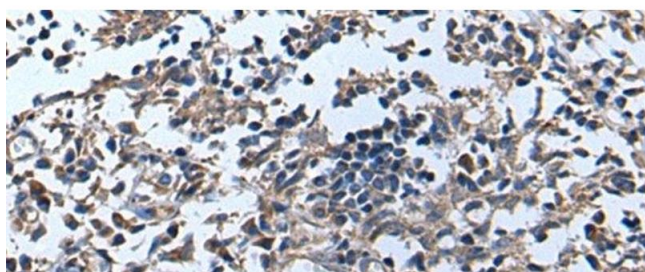
## Application Details

Application Notes:	WB 1:500-1:2000, IHC 1:40-1:200, ELISA 1:5000-1:10000
Restrictions:	For Research Use only

## Handling

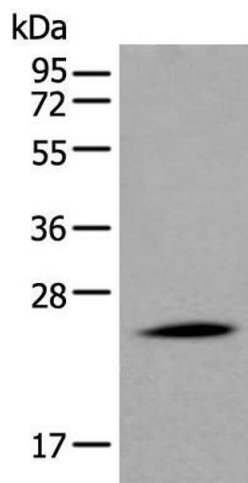
Format:	Liquid
Concentration:	0.9 mg/mL
Buffer:	PBS with 0.05 % Sodium azide and 40 % Glycerol, pH 7.4
Preservative:	Sodium azide
Precaution of Use:	This product contains Sodium azide: a POISONOUS AND HAZARDOUS SUBSTANCE which should be handled by trained staff only.
Storage:	-20 °C
Storage Comment:	Store at -20°C. Avoid freeze / thaw cycles.

## Images



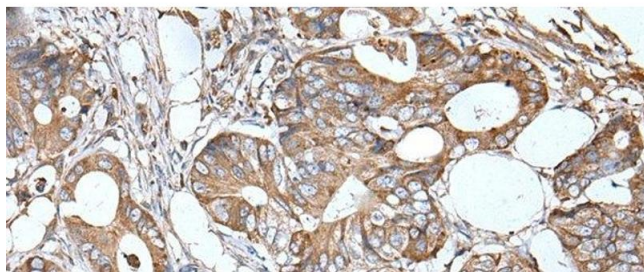
### Immunohistochemistry (Paraffin-embedded Sections)

**Image 1.** Immunohistochemistry of paraffin-embedded Human tonsil tissue using APOD Polyclonal Antibody at dilution of 1:55(x200)



#### Western Blotting

**Image 2.** Western blot analysis of Human liver tissue lysate using APOD Polyclonal Antibody at dilution of 1:550



#### Immunohistochemistry (Paraffin-embedded Sections)

**Image 3.** Immunohistochemistry of paraffin-embedded Human colorectal cancer tissue using APOD Polyclonal Antibody at dilution of 1:55(x200)