

Datasheet for ABIN7244564

**anti-BMP5 antibody****1** Image[Go to Product page](#)

## Overview

Quantity:	200 µL
Target:	BMP5
Reactivity:	Human, Mouse
Host:	Rabbit
Clonality:	Polyclonal
Conjugate:	This BMP5 antibody is un-conjugated
Application:	Western Blotting (WB), ELISA

## Product Details

Immunogen:	Synthetic peptide of human BMP5
Isotype:	IgG
Characteristics:	Polyclonal Antibody
Purification:	Antigen affinity purification

## Target Details

Target:	BMP5
Alternative Name:	BMP5 ( <a href="#">BMP5 Products</a> )
Background:	Bone morphogenetic protein-5 (BMP5), is a member of the transforming growth factor-beta (TGF-beta) superfamily. The superfamily includes large families of growth and differentiation factors. Bone morphogenetic proteins were originally identified by an ability of demineralized bone extract to induce endochondral osteogenesis in vivo in an extraskeletal site. These

## Target Details

proteins are synthesized as prepropeptides,cleaved,and then processed into dimeric proteins. BMP5 may act as an important signaling molecule within the trabecular meshwork and optic nerve head,and may play a potential role in glaucoma pathogenesis. BMP5 is differentially regulated in multiple human cancers.

Molecular Weight: Observed\_MW: Refer to figures  
Calculated\_MW: 52 kDa

UniProt: [P22003](#)

Pathways: [Regulation of Hormone Metabolic Process](#), [Regulation of Hormone Biosynthetic Process](#)

## Application Details

Application Notes: WB 1:500-1:2000, ELISA 1:5000-1:10000

Restrictions: For Research Use only

## Handling

Format: Liquid

Concentration: 0.54 mg/mL

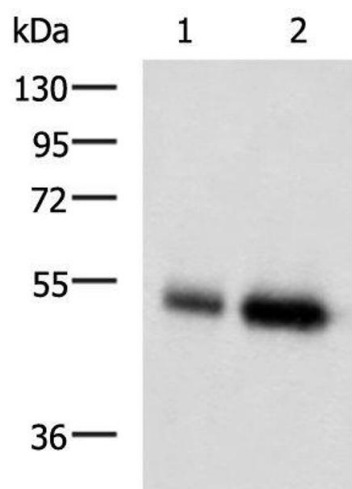
Buffer: PBS with 0.05 % Sodium azide and 40 % Glycerol, pH 7.4

Preservative: Sodium azide

Precaution of Use: This product contains Sodium azide: a POISONOUS AND HAZARDOUS SUBSTANCE which should be handled by trained staff only.

Storage: -20 °C

Storage Comment: Store at -20°C. Avoid freeze / thaw cycles.



Western Blotting

**Image 1.** Western blot analysis of Human placenta tissue and Human right lower lung tissue lysates using BMP5 Polyclonal Antibody at dilution of 1:450