



[Go to Product page](#)

Datasheet for ABIN7244570
anti-CYP11B2 antibody

2 Images

Overview

Quantity:	200 µL
Target:	CYP11B2
Reactivity:	Human
Host:	Rabbit
Clonality:	Polyclonal
Conjugate:	This CYP11B2 antibody is un-conjugated
Application:	Western Blotting (WB), ELISA, Immunohistochemistry (IHC)

Product Details

Immunogen:	Synthetic peptide of human CYP11B2
Isotype:	IgG
Characteristics:	Polyclonal Antibody
Purification:	Antigen affinity purification

Target Details

Target:	CYP11B2
Alternative Name:	CYP11B2 (CYP11B2 Products)
Background:	This gene encodes a member of the cytochrome P450 superfamily of enzymes. The cytochrome P450 proteins are monooxygenases which catalyze many reactions involved in drug metabolism and synthesis of cholesterol, steroids and other lipids. This protein localizes to the mitochondrial inner membrane. The enzyme has steroid 18-hydroxylase activity to

Target Details

synthesize aldosterone and 18-oxocortisol as well as steroid 11 beta-hydroxylase activity.
Mutations in this gene cause corticosterone methyl oxidase deficiency.

Molecular Weight: Observed_MW: Refer to figures
Calculated_MW: 58 kDa

UniProt: [P19099](#)

Pathways: [ACE Inhibitor Pathway](#), [Metabolism of Steroid Hormones and Vitamin D](#), [Steroid Hormone Biosynthesis](#), [Regulation of Systemic Arterial Blood Pressure by Hormones](#), [C21-Steroid Hormone Metabolic Process](#), [Feeding Behaviour](#)

Application Details

Application Notes: WB 1:500-1:2000, IHC 1:50-1:300, ELISA 1:5000-1:10000

Restrictions: For Research Use only

Handling

Format: Liquid

Concentration: 1 mg/mL

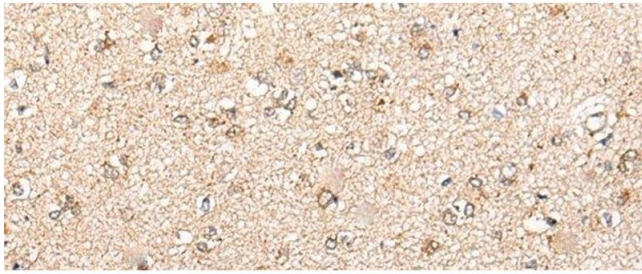
Buffer: PBS with 0.05 % Sodium azide and 40 % Glycerol, pH 7.4

Preservative: Sodium azide

Precaution of Use: This product contains Sodium azide: a POISONOUS AND HAZARDOUS SUBSTANCE which should be handled by trained staff only.

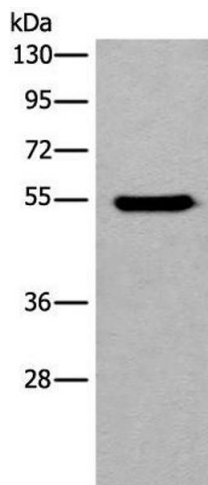
Storage: -20 °C

Storage Comment: Store at -20°C. Avoid freeze / thaw cycles.



Immunohistochemistry (Paraffin-embedded Sections)

Image 1. Immunohistochemistry of paraffin-embedded Human brain tissue using CYP11B2 Polyclonal Antibody at dilution of 1:70(x200)



Western Blotting

Image 2. Western blot analysis of HEPG2 cell lysate using CYP11B2 Polyclonal Antibody at dilution of 1:650