



[Go to Product page](#)

Datasheet for ABIN7244600  
**anti-LDAH/C2orf43 antibody**

3 Images

### Overview

|              |  |
|--------------|--|
| Quantity:    | 200 µL   |
| Target:      | LDAH/C2orf43 (LDAH)                                      |
| Reactivity:  | Human  |
| Host:        | Rabbit   |
| Clonality:   | Polyclonal   |
| Conjugate:   | This LDAH/C2orf43 antibody is un-conjugated              |
| Application: | Western Blotting (WB), ELISA, Immunohistochemistry (IHC) |

### Product Details

|                  |                                 |
|------------------|---------------------------------|
| Immunogen:       | Synthetic peptide of human LDAH |
| Isotype:         | IgG                             |
| Characteristics: | Polyclonal Antibody             |
| Purification:    | Antigen affinity purification   |

### Target Details

|                   |  |
|-------------------|--|
| Target:           | LDAH/C2orf43 (LDAH)  |
| Alternative Name: | LDAH ( <a href="#">LDAH Products</a> )   |
| Background:       | Serine lipid hydrolase associated with lipid droplets. Highly expressed in macrophage-rich areas in atherosclerotic lesions, suggesting that it could promote cholesterol ester turnover in macrophages. |

## Target Details

Molecular Weight: Observed\_MW: Refer to figures  
Calculated\_MW: 37 kDa

UniProt: [Q9H6V9](#)

## Application Details

Application Notes: WB 1:500-1:2000, IHC 1:40-1:200, ELISA 1:5000-1:10000

Restrictions: For Research Use only

## Handling

Format: Liquid

Concentration: 0.8 mg/mL

Buffer: PBS with 0.05 % Sodium azide and 40 % Glycerol, pH 7.4

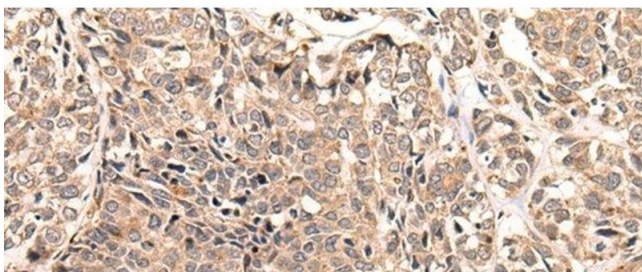
Preservative: Sodium azide

Precaution of Use: This product contains Sodium azide: a POISONOUS AND HAZARDOUS SUBSTANCE which should be handled by trained staff only.

Storage: -20 °C

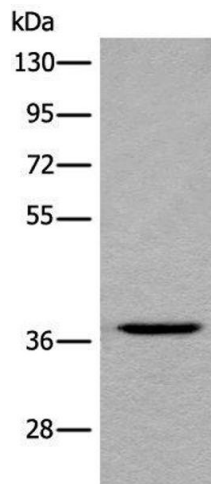
Storage Comment: Store at -20°C. Avoid freeze / thaw cycles.

## Images



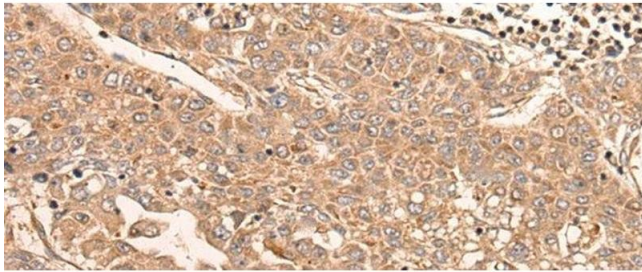
### Immunohistochemistry (Paraffin-embedded Sections)

**Image 1.** Immunohistochemistry of paraffin-embedded Human esophagus cancer tissue using LDAH Polyclonal Antibody at dilution of 1:55(x200)



### Western Blotting

**Image 2.** Western blot analysis of HEPG2 cell lysate using LDAH Polyclonal Antibody at dilution of 1:600



### Immunohistochemistry (Paraffin-embedded Sections)

**Image 3.** Immunohistochemistry of paraffin-embedded Human liver cancer tissue using LDAH Polyclonal Antibody at dilution of 1:55(x200)