

Datasheet for ABIN7244609

anti-CA5B antibody[Go to Product page](#)**1** Image

Overview

Quantity:	200 µL
Target:	CA5B
Reactivity:	Human
Host:	Rabbit
Clonality:	Polyclonal
Conjugate:	This CA5B antibody is un-conjugated
Application:	ELISA, Immunohistochemistry (IHC)

Product Details

Immunogen:	Synthetic peptide of human CA5B
Isotype:	IgG
Characteristics:	Polyclonal Antibody
Purification:	Antigen affinity purification

Target Details

Target:	CA5B
Alternative Name:	CA5B (CA5B Products)
Background:	Carbonic anhydrases (CAs) are a large family of zinc metalloenzymes that catalyze the reversible hydration of carbon dioxide. They participate in a variety of biological processes, including respiration, calcification, acid-base balance, bone resorption, and the formation of aqueous humor, cerebrospinal fluid, saliva, and gastric acid. They show extensive diversity in

Target Details

tissue distribution and in their subcellular localization. CA VB is localized in the mitochondria and shows the highest sequence similarity to the other mitochondrial CA, CA VA. It has a wider tissue distribution than CA VA, which is restricted to the liver. The differences in tissue distribution suggest that the two mitochondrial carbonic anhydrases evolved to assume different physiologic roles. CA5B (Carbonic Anhydrase 5B) is a Protein Coding gene. Diseases associated with CA5B include Heart Conduction Disease and Heart Septal Defect. Among its related pathways are Nitrogen metabolism and Metabolism. GO annotations related to this gene include carbonate dehydratase activity. An important paralog of this gene is CA5A.

UniProt: [Q9Y2D0](#)

Application Details

Application Notes: IHC 1:40-1:200, ELISA 1:5000-1:10000

Restrictions: For Research Use only

Handling

Format: Liquid

Concentration: 0.9 mg/mL

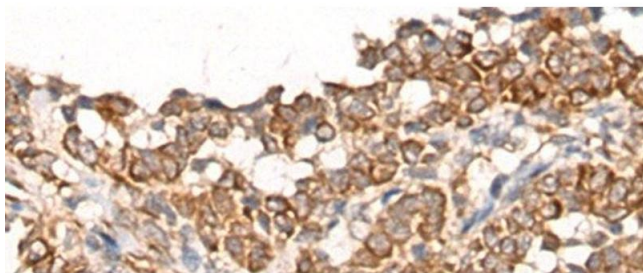
Buffer: PBS with 0.05 % Sodium azide and 40 % Glycerol, pH 7.4

Preservative: Sodium azide

Precaution of Use: This product contains Sodium azide: a POISONOUS AND HAZARDOUS SUBSTANCE which should be handled by trained staff only.

Storage: -20 °C

Storage Comment: Store at -20°C. Avoid freeze / thaw cycles.



Immunohistochemistry (Paraffin-embedded Sections)

Image 1. Immunohistochemistry of paraffin-embedded Human ovarian cancer tissue using CA5B Polyclonal Antibody at dilution of 1:65(x200)