

Datasheet for ABIN7244627

anti-CALML6 antibody**2** Images[Go to Product page](#)

Overview

| | |
|--------------|---------------------------------------|
| Quantity: | 200 µL |
| Target: | CALML6 |
| Reactivity: | Human |
| Host: | Rabbit |
| Clonality: | Polyclonal |
| Conjugate: | This CALML6 antibody is un-conjugated |
| Application: | ELISA, Immunohistochemistry (IHC) |

Product Details

| | |
|------------------|-----------------------------------|
| Immunogen: | Synthetic peptide of human CALML6 |
| Isotype: | IgG |
| Characteristics: | Polyclonal Antibody |
| Purification: | Antigen affinity purification |

Target Details

| | |
|-------------------|--|
| Target: | CALML6 |
| Alternative Name: | CALML6 (CALML6 Products) |
| Background: | The level of intracellular calcium is tightly regulated in all eukaryotic cells. A modest increase in this level can result in a myriad of physiological responses, most of which are mediated by calmodulin (CaM), a universal calcium sensor. CaM directly modulates the activity of protein kinases and phosphatases, ion channels and nitric oxide synthetases and is generally involved |

Target Details

in such diverse processes as cell proliferation, endocytosis, cellular adhesion, protein turnover and smooth muscle contraction. CALML6 (calmodulin-like 6), also known as CAGLP or CALGP, is a 181 amino acid protein that contains four EF-hand domains and shares functional similarity with CaM. Localized to both the nucleus and the cytoplasm, CALML6 is expressed in heart, prostate, ovary, thymus and bone marrow where it may regulate calcium-related events.

UniProt: [Q8TD86](#)

Application Details

Application Notes: IHC 1:40-1:200, ELISA 1:5000-1:10000

Restrictions: For Research Use only

Handling

Format: Liquid

Concentration: 0.5 mg/mL

Buffer: PBS with 0.05 % Sodium azide and 40 % Glycerol, pH 7.4

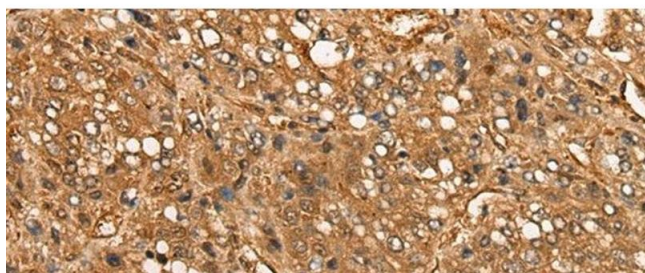
Preservative: Sodium azide

Precaution of Use: This product contains Sodium azide: a POISONOUS AND HAZARDOUS SUBSTANCE which should be handled by trained staff only.

Storage: -20 °C

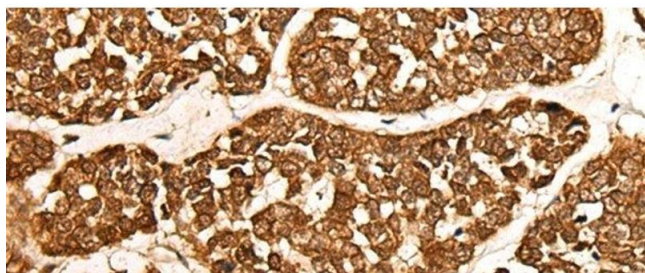
Storage Comment: Store at -20°C. Avoid freeze / thaw cycles.

Images



Immunohistochemistry (Paraffin-embedded Sections)

Image 1. Immunohistochemistry of paraffin-embedded Human liver cancer tissue using CALML6 Polyclonal Antibody at dilution of 1:55(x200)



Immunohistochemistry (Paraffin-embedded Sections)

Image 2. Immunohistochemistry of paraffin-embedded Human esophagus cancer tissue using CALML6 Polyclonal Antibody at dilution of 1:55(x200)