

Datasheet for ABIN7244639

**anti-CCL27 antibody**[Go to Product page](#)**1** Image

## Overview

Quantity:	200 µL
Target:	CCL27
Reactivity:	Human
Host:	Rabbit
Clonality:	Polyclonal
Conjugate:	This CCL27 antibody is un-conjugated
Application:	ELISA, Immunohistochemistry (IHC)

## Product Details

Immunogen:	Synthetic peptide of human CCL27
Isotype:	IgG
Characteristics:	Polyclonal Antibody
Purification:	Antigen affinity purification

## Target Details

Target:	CCL27
Alternative Name:	CCL27 ( <a href="#">CCL27 Products</a> )
Background:	<p>This gene is one of several CC cytokine genes clustered on the p-arm of chromosome 9. Cytokines are a family of secreted proteins involved in immunoregulatory and inflammatory processes. The CC cytokines are proteins characterized by two adjacent cysteines. The protein encoded by this gene is chemotactic for skin-associated memory T lymphocytes. This cytokine</p>

## Target Details

may also play a role in mediating homing of lymphocytes to cutaneous sites. It specifically binds to chemokine receptor 10 (CCR10). Studies of a similar murine protein indicate that these protein-receptor interactions have a pivotal role in T cell-mediated skin inflammation. CCL27 (C-C Motif Chemokine Ligand 27) is a Protein Coding gene. Diseases associated with CCL27 include Dermatitis and Atopic Dermatitis. Among its related pathways are Peptide ligand-binding receptors and PEDF Induced Signaling. GO annotations related to this gene include chemokine activity. An important paralog of this gene is CCL28.

UniProt: [Q9Y4X3](#)

## Application Details

Application Notes: IHC 1:50-1:300, ELISA 1:5000-1:10000

Restrictions: For Research Use only

## Handling

Format: Liquid

Concentration: 1.5 mg/mL

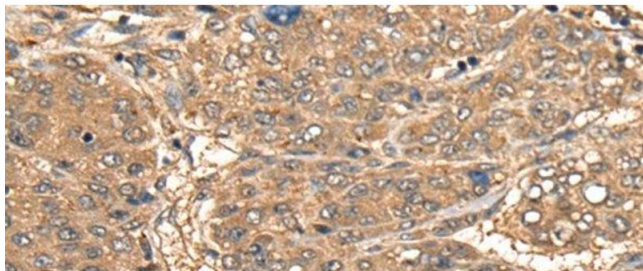
Buffer: PBS with 0.05 % Sodium azide and 40 % Glycerol, pH 7.4

Preservative: Sodium azide

Precaution of Use: This product contains Sodium azide: a POISONOUS AND HAZARDOUS SUBSTANCE which should be handled by trained staff only.

Storage: -20 °C

Storage Comment: Store at -20°C. Avoid freeze / thaw cycles.



#### Immunohistochemistry (Paraffin-embedded Sections)

**Image 1.** Immunohistochemistry of paraffin-embedded Human liver cancer tissue using CCL27 Polyclonal Antibody at dilution of 1:55(x200)